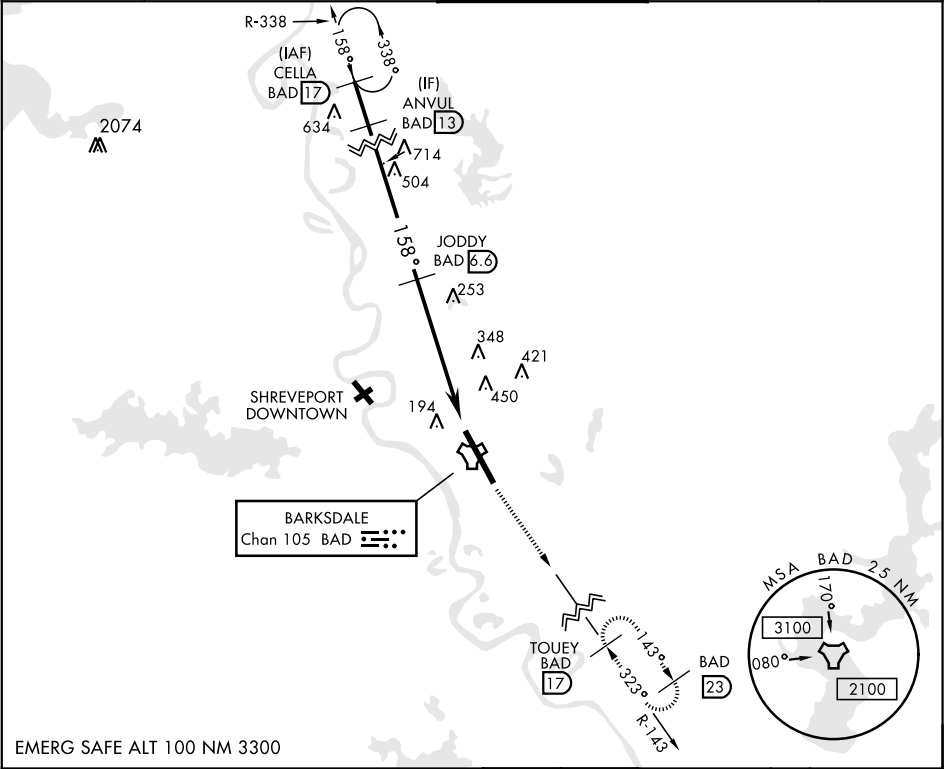


TACAN Y RWY 15

TACAN BAD Chan 105	APCH CRS 158°	Rwy ldg 11,758 THRE 163 Arpt Elev 165	AL-391 [USAF]	BARKSDALE AFB (KBAD)
* When ALS inop, increase CAT AB RVR to 55 and vis to 1 mile CAT CDE vis to 1 3/4 miles ** Circling not authorized W of Rwy.			ALSF-1 A1	MISSED APPROACH: Climb to 3000 via BAD R-143 direct TOUEY and hold.
ATIS 307.025	SHREVEPORT APP CON 320°-152° 123.75 360.725 153°-319° 119.9 335.55	BARKSDALE TOWER 128.25 278.3	GND CON 121.8 253.5	ASR



EMERG SAFE ALT 100 NM 3300

CELLA R-338		3000 BAD R-143		TOUEY BAD R-143		ELEV 165	THRE 163
4000		2500		1800		158° to TACAN	
2.57° TCH 53		158°		5.2 NM		6 NM	
CATEGORY	A	B	C	D	E	TACAN	
S-15 *	800/24	637 (700-1/2)	800-1 3/8	637 (700-1 3/8)		HAXOG	
CIRCLING **	NOT AUTHORIZED			800-2 635 (700-2)	800-2 1/4 635 (700-2 1/4)	HIRL Rwy 15-33	

TACAN Y RWY 15

SC-4, 03 DEC 2020 to 31 DEC 2020

SC-4, 03 DEC 2020 to 31 DEC 2020