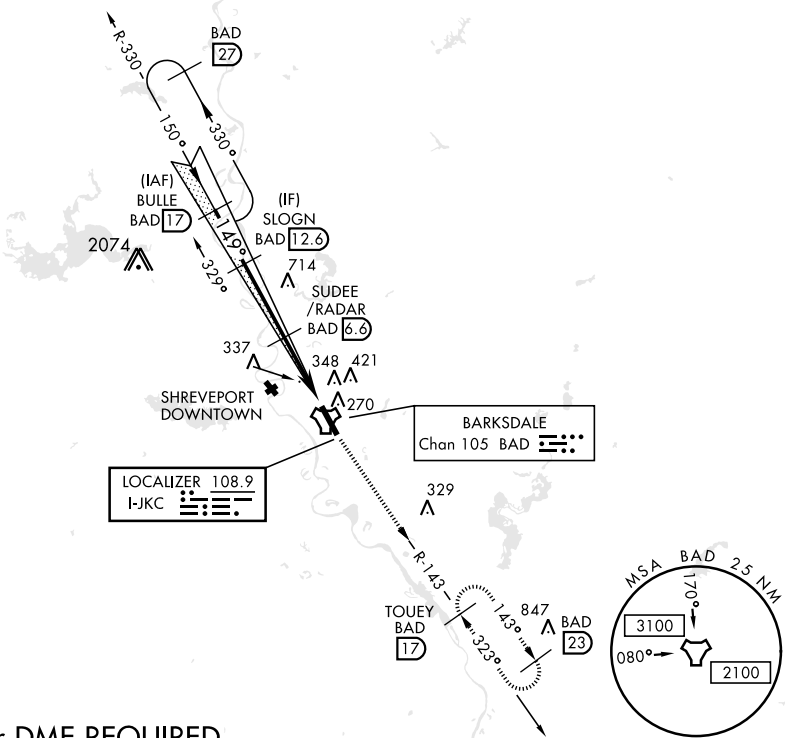


ILS or LOC Z RWY 15

LOC I-JKC 108.9	APCH CRS 149°	Rwy ldg 11,758 THRE 163 Arprt Elev 165	AL-391 [USAF]	BARKSDALE AFB (KBAD)
* When ALS inop, increase RVR to 40 and vis to ¾ mile. ** When ALS inop, increase CAT AB RVR to 55 and vis to 1 mile, CAT CDE vis to 1½ miles.			ALSF-1 	MISSED APPROACH: Climb to 3000 via BAD R-143 direct TOUEY and hold.
ATIS 307.025	SHREVEPORT APP CON 320°-152° 123.75 360.725 153°-319° 119.9 335.55	BARKSDALE TOWER 128.25 278.3	GND CON 121.8 253.5	ASR

*** Circling not authorized W of Rwy.



RADAR or DME REQUIRED

EMERG SAFE ALT 100 NM 3300

					ELEV 165		THRE 163
† LOC ONLY					3000		TOUEY BAD R-143
BULLE R-330 SLOGN SUDEE /RADAR					BAD R-143		17
4000 2500 1800 149° 5.2 NM 6 NM					329		17
CATEGORY A B C D E					HRL Rwy 15-33		
S-ILS 15*					FAF to MAP 5.2 NM		
S-LOC 15**					Knots		
***					Min:Sec		
CIRCLING					60 90 120 150 180		
NOT AUTHORIZED					5:12 3:28 2:36 2:05 1:44		
760-2 780-2 ¼							
595 (600-2) 615 (700-2 ¼)							

ILS or LOC Z RWY 15

SC-4, 03 DEC 2020 to 31 DEC 2020

SC-4, 03 DEC 2020 to 31 DEC 2020