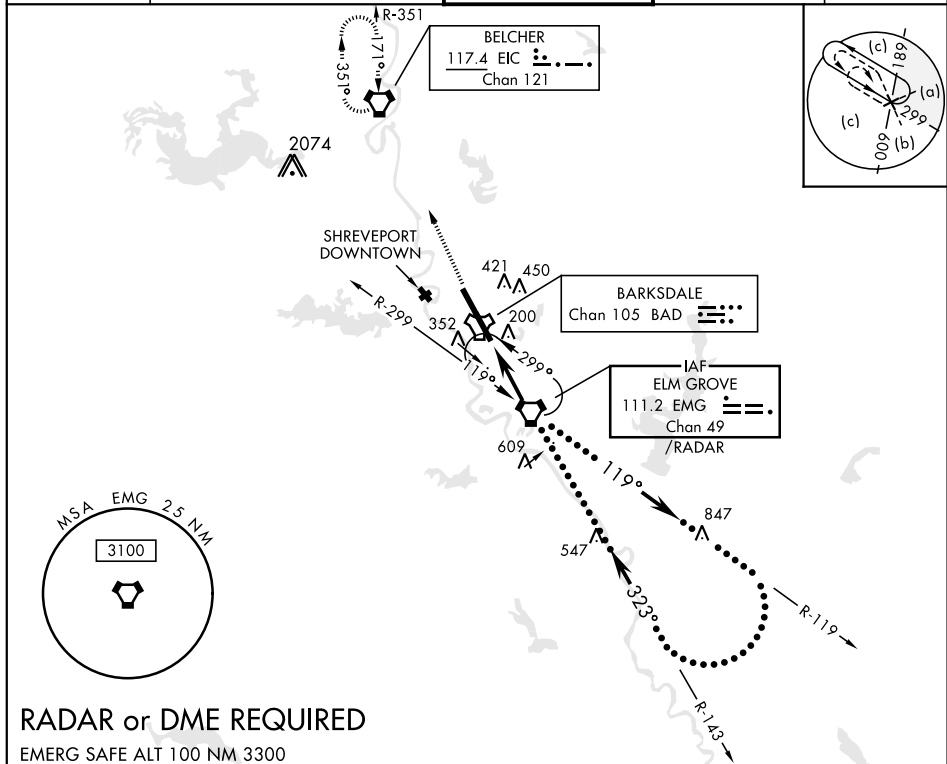


HI-VOR/DME Z RWY 33

VORTAC EMG 111.2 Chan 49	APCH CRS 323°	Rwy ldg 11,758 THRE 161 Arpt Elev 165	JAL-391 [USAF]	BARKSDALE AFB (KBAD)
* When ALS inop, increase CAT CDE vis to 1½ miles. ** Circling not authorized W of Rwy.			ALSF-1 	MISSED APPROACH: Climb to 3100 direct to EIC VORTAC and hold.

ATIS 307.025	SHREVEPORT APP CON 320°-152° 123.75 360.725 153°-319° 119.9 335.55	BARKSDALE TOWER 128.25 278.3	GND CON 121.8 253.5	ASR
------------------------	--	--	-------------------------------	-----



RADAR or DME REQUIRED

EMERG SAFE ALT 100 NM 3300

<div>3100</div> <div>↑</div>			<div>EIC</div> <div></div>			<div>EMG VORTAC /RADAR</div>			<div>ELEV 165</div>			<div>THRE 161</div>					
<div></div>												<div></div>					
CATEGORY			C			D			E								
S-33*			640/50			479 (500-1)											
CIRCLING**			NOT AUTHORIZED			760-2 595 (600-2)			780-2¼ 615 (700-2¼)								
<div>HIRL Rwy 15-33</div>																	
<div>FAF to MAP 5.4 NM</div>																	
Knots			120			140			160			180			200		
Min:Sec			2:42			2:19			2:01			1:48			1:37		

HI-VOR/DME Z RWY 33