

## HI-TACAN Z RWY 33

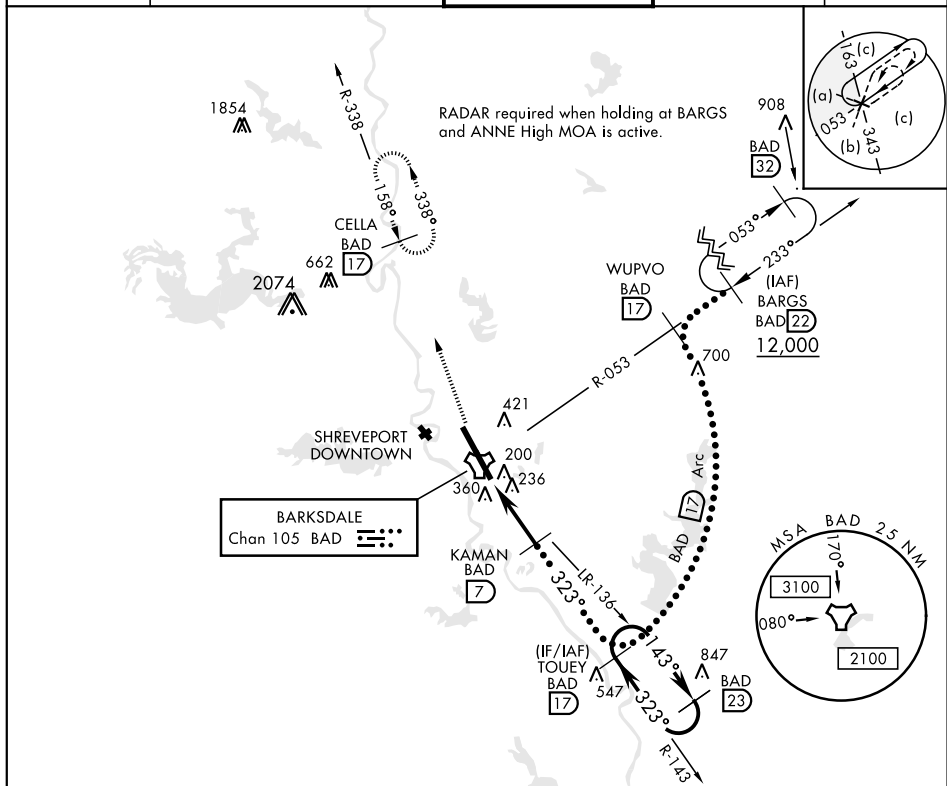
TACAN BAD Chan <b>105</b>	APCH CRS <b>323°</b>	Rwy ldg <b>11,758</b> THRE <b>161</b> Arpt Elev <b>165</b>	JAL-391 [USAF]	BARKSDALE AFB (KBAD)
------------------------------	-------------------------	--	----------------	----------------------

\* When ALS inop, increase CAT CDE vis to 1½ miles.

\*\* Circling not authorized W of Rwy.

MISSED APPROACH: Climb to 4000  
via BAD R-338 direct CELLA and hold.

ATIS <b>307.025</b>	SHREVEPORT APP CON 320°-152° <b>123.75 360.725</b> 153°-319° <b>119.9 335.55</b>	BARKSDALE TOWER <b>128.25 278.3</b>	GND CON <b>121.8 253.5</b>	ASR
------------------------	--	--	-------------------------------	-----



EMERG SAFE ALT 100 NM 3300

4000 BAD R-338	CELLA BAD R-338 17	ELEV 165	THRE 161
TACAN	KAMAN 7	TOUEY 17	
HOVUX 1.8	2.8	143°	323°
1800	3000	2.57°	TCH 50
6 NM	5.2 NM		
CATEGORY	C	D	E
S-33*	640/50	479 (500-1)	
CIRCLING **	NOT AUTHORIZED	760-2 595 (600-2)	780-2¼ 615 (700-2¼)
HIREL Rwy 15-33		323° to TACAN	

## HI-TACAN Z RWY 33