

VORTAC HRV 114.1 Chan 88	APP CRS 351°	Rwy Idg 5135 TDZE 8 Apt Elev 8
--	------------------------	---

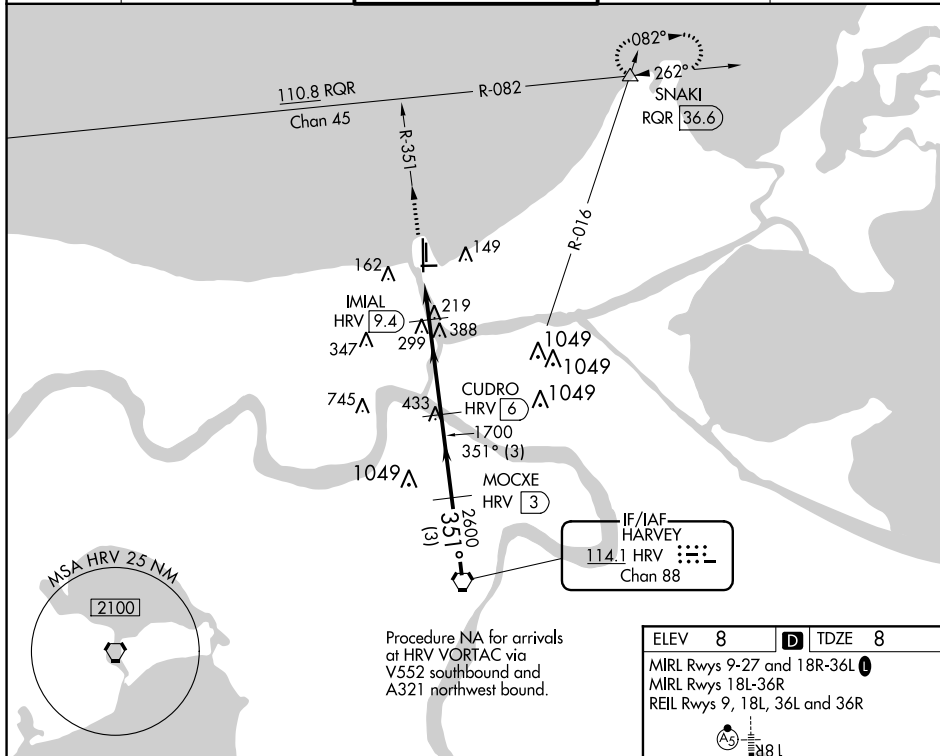
VOR/DME RWY 36L
LAKEFRONT (NEW)

T Visibility reduction by helicopters NA.

A When local altimeter setting not received, use Louis Armstrong New Orleans Intl altimeter setting and increase all MDA 40 feet and increase S-36L Cat C/D and Circling Cat D visibilities $\frac{1}{4}$ mile.

MISSED APPROACH: Climb to 2000
via HRV R-351 and RQR R-082 to
SNAKI INT/RQR 36.6 DME and hold.

ATIS 124.9	NEW ORLEANS APP CON NORTH 133.15 290.3 SOUTH 123.85 256.9	LAKEFRONT TOWER ★ 119.9 (CTAF)	GND CON 121.7	CLNC DEL 127.4
----------------------	---	--	-------------------------	--------------------------



Procedure NA for arrivals
at HRV VORTAC via
V552 southbound and
A321 northwest bound.

2000
↑
HRV R-351

RQR R-082

SNAKI
△

VGSI and descent angles not coincident
(VGSI Angle 3.00/TCH 50).

Procedure
Turn
NA

*720 when using
Louis Armstrong
New Orleans Intl
altimeter setting.

HRV 11.2

IMIAL
HRV 9.4

CUDRO
HRV 6

MOCXE
HRV 3

HRV VORTAC

351°

2600

1700

*680

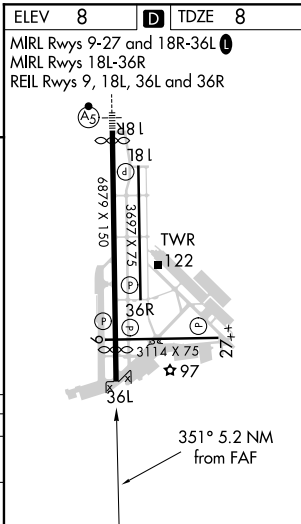
1.8 NM

3.4 NM

3 NM

3 NM

CATEGORY	A	B	C	D
S-36L	480-1	472 (500-1)	480-1¼ 472 (500-1¼)	480-1½ 472 (500-1½)
CIRCLING	520-1	512 (600-1)	520-1½ 512 (600-1½)	660-2 652 (700-2)



VOR/DME RWY 36L