

WAAS CH 86913 W36A	APP CRS 357°	Rwy Idg 5135 TDZE 8 Apt Elev 8
----------------------------------------	------------------------	-----------------------------------------------------------

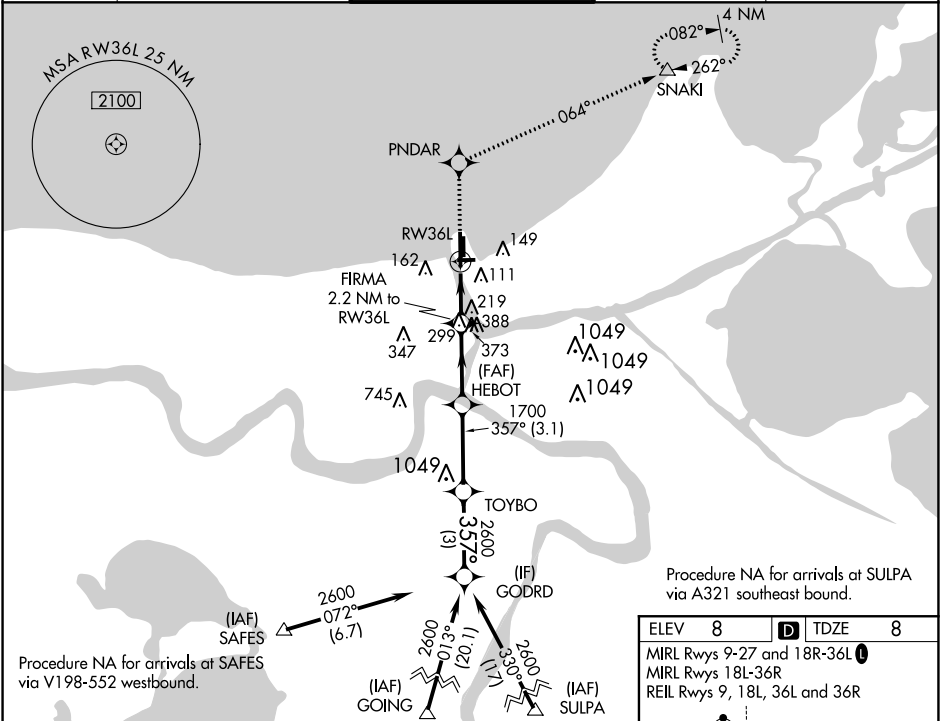
RNAV (GPS) RWY 36L

LAKEFRONT (NEW)

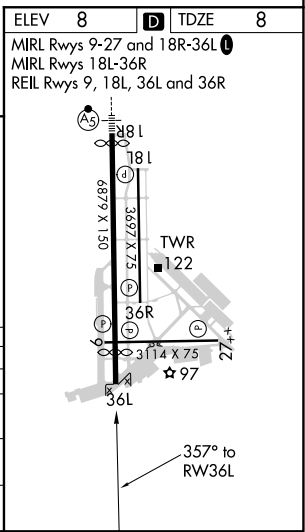
⚠ For uncompensated Baro-VNAV systems, LNAV/VNAV NA below -15°C (5°F) or above 49°C (120°F). DME/DME RNP-0.3 NA. When local altimeter setting not received, use Louis Armstrong New Orleans Intl altimeter setting: increase LPV DA to 369 feet, LNAV/VNAV DA to 460 feet and all visibilities ½ mile; increase all MDA 40 feet and Circling Cat D visibility ¼ mile. VDP and Baro-VNAV NA when using Louis Armstrong New Orleans Intl altimeter setting.

MISSED APPROACH: Climb to 2100 direct PNDAR and via track 064° to SNAKI and hold.

ATIS 124.9	NEW ORLEANS APP CON NORTH 133.15 290.3 SOUTH 123.85 256.9	LAKEFRONT TOWER ★ 119.9 (CTAF)	GND CON 121.7	CLNC DEL 127.4
----------------------	-------------------------------------------------------------------------------	------------------------------------------	-------------------------	--------------------------



2100	PNDAR	tr 064°	SNAKI	Procedure Turn NA
*LNAV only.				
RW36L 1.7 NM, FIRMA 2.2 NM to RW36L, HEBOT 1700, TOYBO 2600, GODRD 2600				
CATEGORY	A	B	C	D
LPV DA	340-1⅛		332 (400-1⅛)	
LNAV/VNAV DA	431-1⅜		423 (500-1⅜)	
LNAV MDA	600-1	592 (600-1)	600-1¾	592 (600-1¾)
CIRCLING	600-1	592 (600-1)	600-1¾ 592 (600-1¾)	660-2 652 (700-2)



SC-4, 03 DEC 2020 to 31 DEC 2020

SC-4, 03 DEC 2020 to 31 DEC 2020