
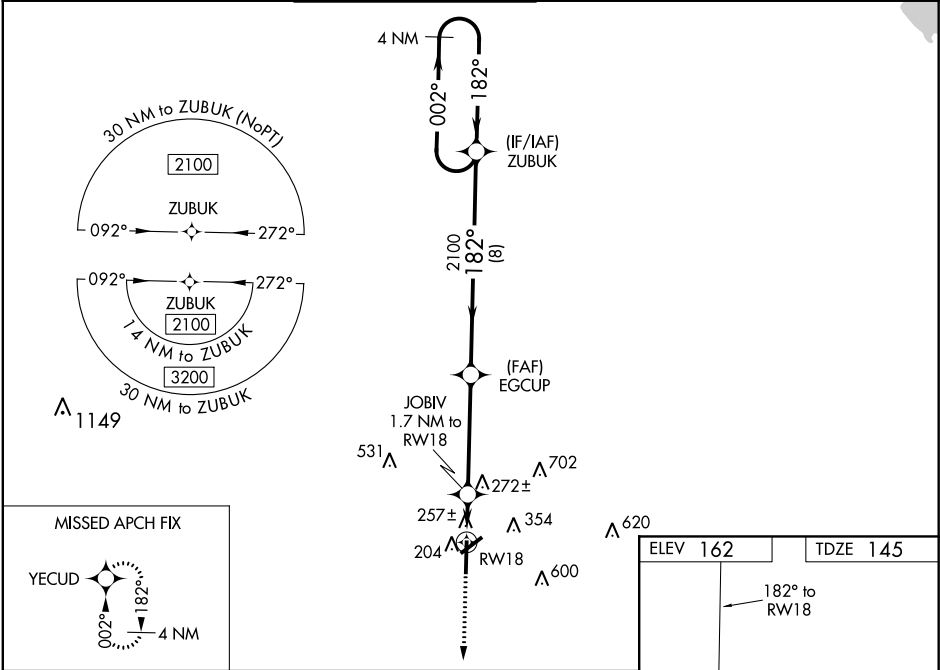


| | | | |
|--|------------------------|-----------------------------|---|
| WAAS CH 50199 W18A | APP CRS 182° | Rwy ldg TDZE Apt Elev | 6501 145 162 |
|--|------------------------|-----------------------------|---|

RNAV (GPS) RWY 18
GREENWOOD-LEFLORE (GWO)

| | | |
|---|--|--|
| For uncompensated Baro-VNAV systems, LNAV/VNAV NA below -22°C (-8°F) or above 54°C (130°F). DME/DME RNP-0.3 NA. Baro-VNAV and VDP NA when using Greenville altimeter setting. For inop ALS when using Greenville altimeter setting, increase LPV all Cats visibility to 1½ SM, and LNAV/VNAV all Cats to 1¾ SM, and LNAV Cat A/B to 1 SM, and Cat C/D to 1¾ SM. When local altimeter setting not received, use Greenville altimeter setting: increase LPV DA to 580 feet and visibility ¼ SM, LNAV/VNAV DA to 675 feet and visibility ¾ SM; increase all MDAS 120 feet and visibility LNAV Cat C/D ¼ SM and Circling Cat C ½ SM. For inop ALS, increase LNAV/VNAV all Cats visibility to 1¾ SM, and LNAV all Cats to 1 SM. Rwy 18 helicopter visibility reduction below ¾ SM NA. Rwy 5, 23, 27 helicopter visibility reduction below 1 SM NA. Circling Rwy 5, 23, 27 NA at night. | MALSR  | MISSED APPROACH: Climb to 2100 direct YECUD and hold. |
|---|--|--|

| | | | | | |
|------------------------|--------------------------------------|---|--------------------------------|---------------------------|-------------------------|
| ASOS 119.975 | MEMPHIS CENTER 132.5 259.1 | GREENWOOD TOWER * 118.35 (CTAF) 0 367.6 | GND CON 125.55 373.4 | CLNC DEL 125.55 | UNICOM 122.95 |
|------------------------|--------------------------------------|---|--------------------------------|---------------------------|-------------------------|



| | | | | |
|--------------------|--------------------------|---------------|-------------------------|------------------------|
| 2100 ↑ YECUD | JOBIV 1.7 NM to RW 18 | EGCUP 2100 | ZUBUK | 4 NM Holding Pattern |
| *LNAV only. | *1 NM to RW 18 | *720 | 2100 | 002° → 2100 ← 182° |
| 1 NM | 0.7 NM | 4.3 NM | 8 NM | GP 3.00° TCH 51 |
| CATEGORY | A | B | C | D |
| LPV DA | | 471-¾ | 326 (400-¾) | |
| LNAV/VNAV DA | | 566-1 | 421 (500-1) | |
| LNAV MDA | | 520-¾ | 375 (400-¾) | |
| CIRCLING | 760-1 | 598 (700-1) | 1000-2½ 838 (900-2½) | 1120-3 958 (1000-3) |

