

LOC I-GWO	APP CRS	Rwy Idg	6501
111.3	182°	TDZE	145
		Apt Elev	162

ILS or LOC RWY 18

GREENWOOD-LEFLORE (GWO)

When local altimeter setting not received, use Greenville altimeter setting: increase DA to 580 feet and all visibilities ½ SM; increase all MDAs 120 feet and visibility S-LOC 18 Cat C/D ¼ SM and Circling Cat C ½ SM and JULTU FIX minimums S-LOC 18 Cat C/D ¼ SM and Circling Cat C ½ SM.

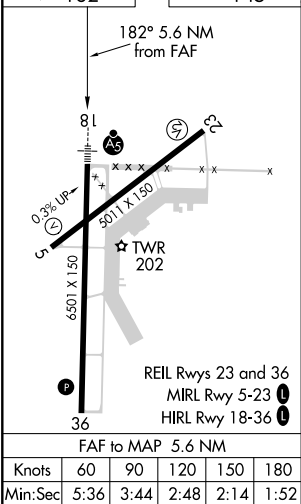
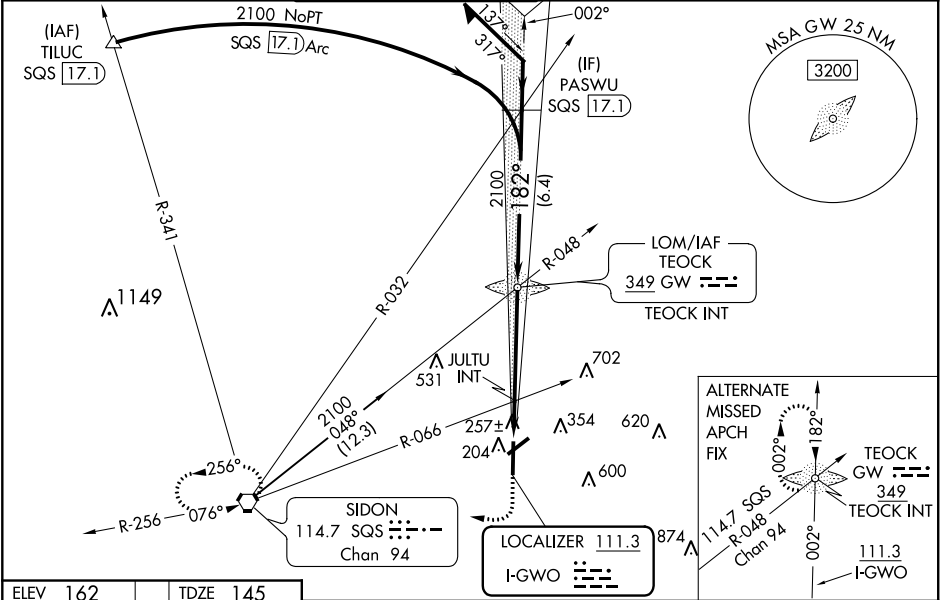
▼ For inop ALS, increase S-LOC 18 Cat A/B visibility to 1 SM, and Cat C/D to ¾ SM, and JULTU FIX minimums S-LOC 18 all Cats to 1 SM. For inop ALS when using Greenville altimeter setting, increase S-LOC 18 all Cats visibility to 1½ SM, and S-LOC 18 Cat A/B to 1 SM, and JULTU FIX minimums S-LOC 18 Cat A/B to 1 SM, and Cat C/D to 1¾ SM. Circling Rwy 5, 23, 27 NA at night.

Rwy 18 helicopter visibility reduction below ¾ SM NA. Rwy 5, 23, 27 helicopter visibility reduction below 1 SM NA.

MALSR

MISSED APPROACH:
Climb to 1000 then
climbing right turn to
2500 direct SQS
VORTAC and hold.

ASOS	MEMPHIS CENTER	GREENWOOD TOWER ★	GND CON	CLNC DEL	UNICOM
119.975	132.5 259.1	118.35 (CTAF) 0 367.6	125.55 373.4	125.55	122.95



1000	2500	SQS	TEOCK LOM/INT	Remain within 10 NM
*LOC only.	*740 when using Greenville altimeter setting.		1999	002°
			JULTU INT	182°
			620	2100
			1.5 NM	4.1 NM
CATEGORY	A	B	C	D
S-ILS 18		471-¾	326 (400-¾)	
S-LOC 18	620-¾	475 (500-¾)	620-1	475 (500-1)
CIRCLING	760-1	598 (600-1)	1000-2½ 838 (900-2½)	1120-3 958 (1000-3)
JULTU FIX MINIMUMS (DUAL VOR RECEIVERS REQUIRED)				
S-LOC 18		520-¾	375 (400-¾)	
CIRCLING	760-1	598 (600-1)	1000-2½ 838 (900-2½)	1120-3 958 (1000-3)