

APP CRS
355°

Rwy Idg
5495

TDZE
197

Apt Elev
202

RNAV (GPS) RWY 36

BEAUREGARD RGNL (DRI)

⚠ Inoperative table does not apply. For uncompensated Baro-VNAV systems, LNAV/VNAV NA below -15°C (5°F) or above 48°C (118°F). DME/DME RNP-0.3 NA. Visibility reduction by helicopters NA. When local altimeter setting not received, use Fort Polk altimeter setting and increase all DA 53 feet, and all MDA 60 feet, increase LNAV/VNAV all Cats and LNAV Cat C and D visibility ¼ mile.

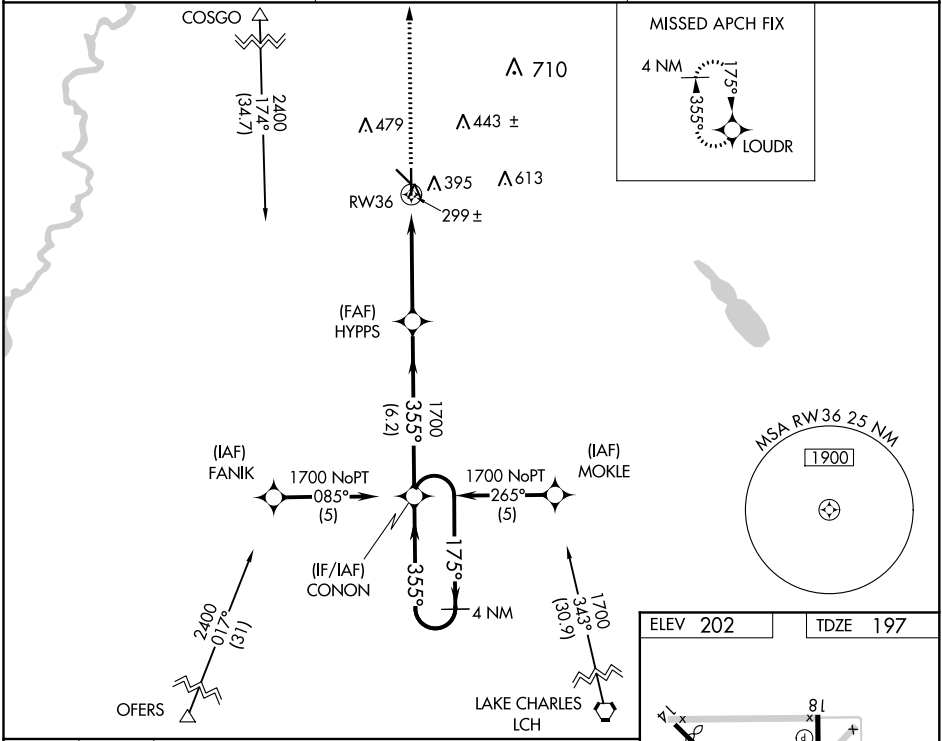
ODALS

MISSED APPROACH:
Climb to 1900 direct LOUDR and hold.

AWOS-3PT
118.225

POLK APP CON
123.7 261.3

UNICOM
122.8 (CTAF)



1900
↑

LOUDR

VGSI and RNAV glidepath not coincident
(VGSI Angle 3.00/TCH 50).

4 NM
Holding Pattern

RW36

HYPPS

CONON

1700

GP 3.00°
TCH 40

CATEGORY	A	B	C	D
LNAV/VNAV DA	569-1¼ 372 (400-1¼)			
LNAV MDA	660-1 463 (500-1)	660-1¼ 463 (500-1¼)	660-1½ 463 (500-1½)	
CIRCLING	720-1 518 (600-1)	720-1½ 518 (600-1½)	780-2 578 (600-2)	

ELEV 202

TDZE 197

REIL Rwy 18 and 36
MIRL Rwy 18-36

36

355° to RW36