

COLUMBUS, MISSISSIPPI

COLUMBUS, MISSISSIPPI		31C	31R
LOC I-TBB	APCH CRS	Rwy Idg <b>12,004</b>	<b>8001</b>
<u><b>108.7</b></u>	<b>315°</b>	TDZE <b>213</b>	<b>218</b>
		Arpt Elev <b>218</b>	<b>218</b>

AL-91 [USAF]

COLUMBUS AFB (KCBM)

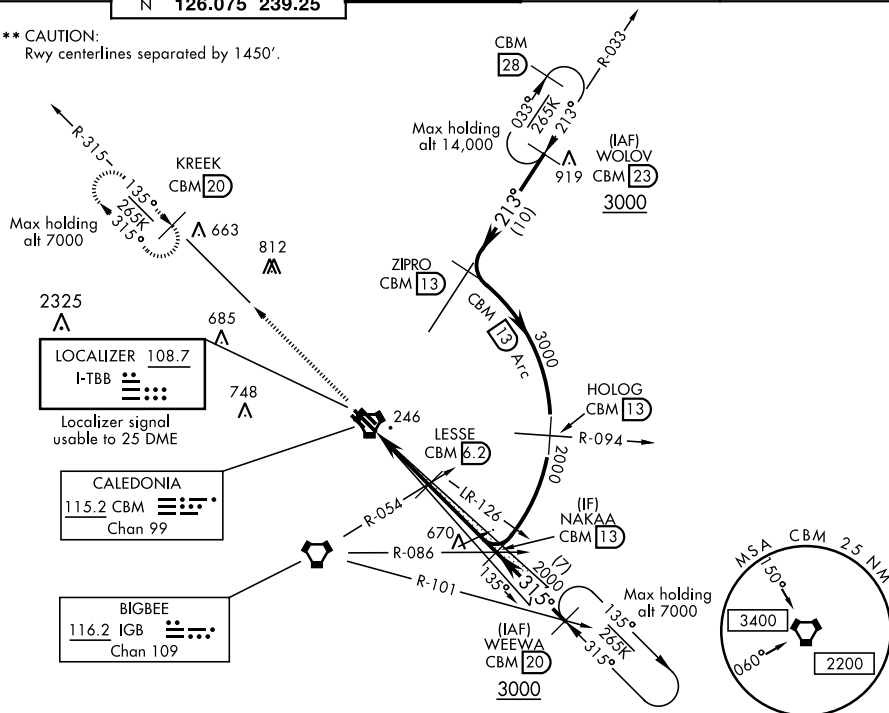
- T** \* When ALS inop, increase RVR to 40, vis to  $\frac{3}{4}$  mile.  
\*\* When ALS inop, increase RVR to 55, vis to 1 mile.

ALSF-1

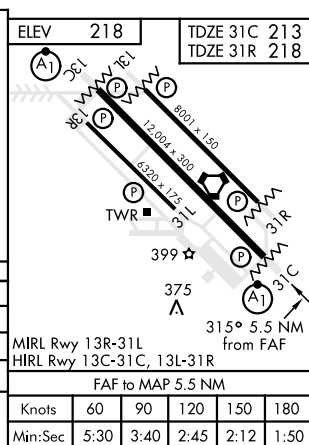
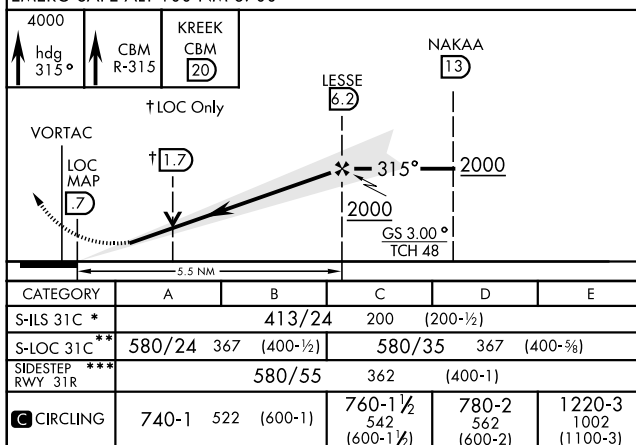
**MISSED APPROACH:** Climb heading 315° to intercept the VOR/TAC CBM R-315 outbound to KREEK (CBM R-315/20) and hold. Maintain 4000.

ATIS 115.2 273.5	COLUMBUS APP CON SE 134.55 350.3 SW 135.6 323.275 N 126.075 239.25	COLUMBUS TOWER 126.65 379.925	GND CON 121.9 275.8	CLNC DEL 269.55
---------------------	---	----------------------------------	------------------------	--------------------

\*\*\* CAUTION:  
Rwy centerlines separated by 1450'.



EMERG SAFE ALT 100 NM 3700



COLUMBUS, MISSISSIPPI  
Amdt 1 13AUG20

33° 39' N-88° 27' W

COLUMBUS AFB (KCBM)

ILS or LOC Y RWY 31C

SC-4, 03 DEC 2020 to 31 DEC 2020

SC-4, 03 DEC 2020 to 31 DEC 2020