

RNAV (GPS) RWY 22

APCH CRS 217°	Rwy Idg 6631 TDZE 19 Arpt Elev 33
------------------	---

AL-49 (USAF)

KEESLER AFB (KBIX)

T * When ALS inop, increase vis to 1 3/8 miles.
 ** When ALS inop, increase CAT AB RVR to 55, vis to 1 mile;
 CAT CD vis to 1 3/8 miles.



MISSED APPROACH: Climb to 2200 direct CEDPO and track 175° to WAPGA. Expect ATC instructions.

ATIS
281.55

GULFPORT APP CON/DEP CON
124.6 354.1 130° - 309°
127.5 254.25 310° - 129°

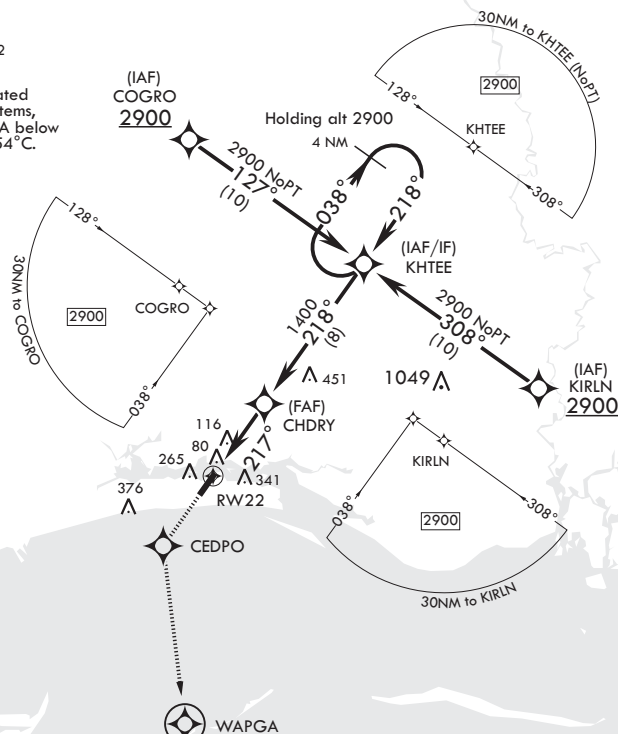
TOWER★
0.75 269 075

GND CON
121.8 275.8

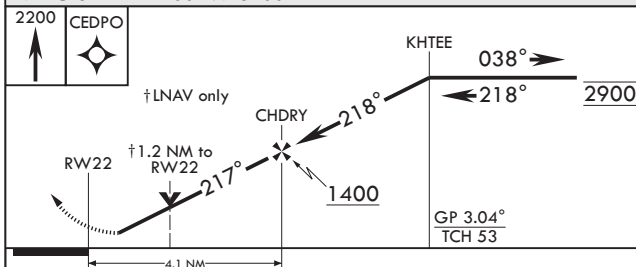
CLNC DEL
121.8 275.8

RNP APCH

332
•
For uncompensated
Baro-VNAV systems,
LNAV/VNAV NA below
8°C or above 54°C.



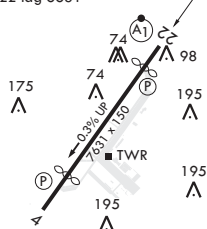
EMERG SAFE ALT 100 NM 3100



CATEGORY	A	B	C	D
LNNAV/VNAV DA*	460/55	441	(500-1)	
LNNAV MDA**	460/40	441 (500-¾)	460/55	441 (500-1)
C CIRCLING	600-1 567 (600-1)	680-1 647 (700-1)	700-1¾ 667 (700-1¾)	700-2 667 (700-2)

ELEV 33		TDZE 19
---------	--	---------

Rwy 4 Idg 6031' 217° to RW22
Rwy 22 Idg 6631'



REIL Rwy 4
HIRL all Rwys
Rwy 22 2000' non-std apch lgt system