

LOC/DME I-CLZ <b>108.7</b> Chan <b>24</b>	APP CRS <b>223°</b>	Rwy Idg <b>7500</b> TDZE <b>70</b> Apt Elev <b>70</b>
---	------------------------	---

## ILS or LOC/DME RWY 22R

Baton Rouge Metropolitan, Ryan Field (BTR)

**V** When local altimeter setting not received, use Hammond altimeter setting and increase all DDA 91 feet and all MDA 100 feet; increase S-ILS 22R all Cats visibility to RVR 2200; increase S-LOC 22R Cat C/D visibility to RVR 5000. For inop MALSR when using Hammond altimeter setting, increase S-ILS 22R all Cats visibility to RVR 4500, and S-LOC 22R Cat C/D visibility to 1½ mile. For inop MALSR, increase S-LOC 22R Cat C/D visibility to RVR 5500.

**A** VDP NA with Hammond altimeter setting.

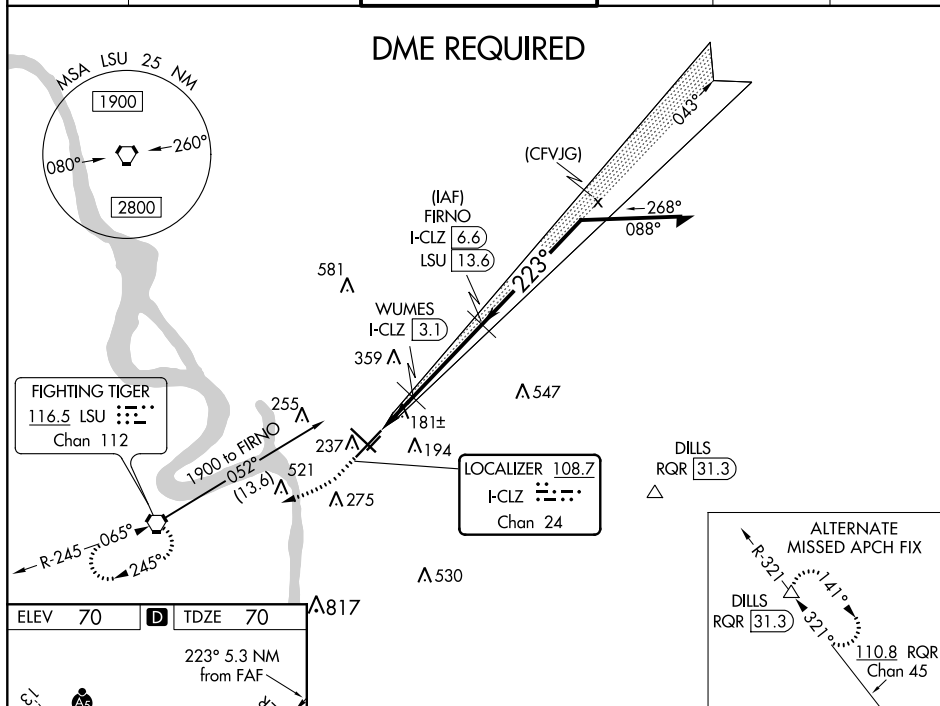
**ASR**

MALSR

**MISSED APPROACH:**  
Climb to 600 then  
climbing right turn to  
2000 direct LSU  
VORTAC and hold.

ATIS	BATON ROUGE APP CON ★	RYAN TOWER ★	GND CON	CLNC DEL	UNICOM
125.2	120.3 278.3	118.45 (CTAF) 0 257.8	121.9	119.4	122.95



TDZ/CL Rwy 22R  
HRL Rwys 13-31 and 4L-22R  
MIRL Rwy 4R-22L

258 ☆

TWR 185

600 2000 LSU

\*LOC only.

I-CLZ 1.4

\*I-CLZ 2.4

WUMES I-CLZ 3.1

FIRNO I-CLZ 6.6

Remain within 10 NM

1800 043° 1900

223°

1800

GS 3.00° TCH 55

CATEGORY	A	B	C	D
S-ILS 22R	270/18		200 (200-½)	
S-LOC 22R	440/24	370 (400-½)	440/35	370 (400-¾)
CIRCLING	560-1	660-1	780-2	840-2½
	490 (500-1)	590 (600-1)	710 (800-2)	770 (800-2½)