

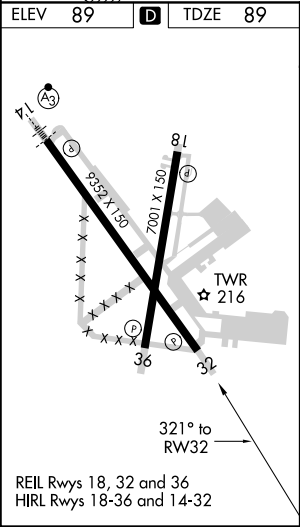
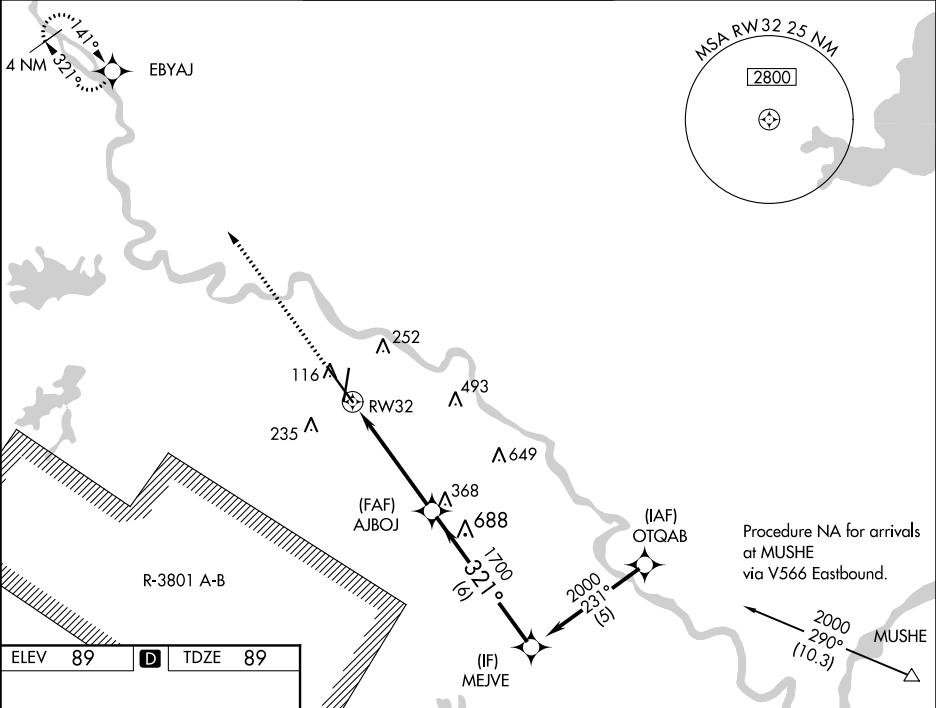
WAAS CH 50110 W32A	APP CRS 321°	Rwy Idg 9352 TDZE 89 Apt Elev 89
--	------------------------	---

RNAV (GPS) RWY 32

ALEXANDRIA INTL (AEX)

<div><div>▼</div><div>DME/DME RNP-0.3 NA. Baro-VNAV NA below -15°C (5°F) When R-3801A-B active, RADAR required.</div></div>	MISSED APPROACH: Climb to 3000 direct EBYAJ WP and hold.
---	---

ASOS 123.975	POLK APP CON 125.4 254.8	ALEXANDRIA TOWER 127.35 (CTAF) 269.2	GND CON 121.9 372.0	CLNC DEL 121.9
------------------------	------------------------------------	--	-------------------------------	--------------------------



3000	EBYAJ	VGSJ and RNAV glidepath not coincident. (VGSJ Angle 3.00/TCH 64).			Procedure Turn NA
*LNAV only.		*1.2 NM to RW32			
		RW32			
		1.2 NM	3.6 NM	6 NM	
CATEGORY	A	B	C	D	
LPV DA		340/50	251 (300-1)		
LNAV/VNAV DA		460/60	371 (400-1¼)		
LNAV MDA	520/50	431 (500-1)	520/60 431 (500-1¼)	520-1½ 431 (500-1½)	
CIRCLING	540-1¼ 451 (500-1¼)	560-1¼ 471 (500-1¼)	560-1½ 471 (500-1½)	640-2 551 (600-2)	