

WAAS CH 99500 W12A	APP CRS 120°	Rwy Idg 3482 TDZE 5 Apt Elev 5
--	------------------------	---

RNAV (GPS) RWY 12

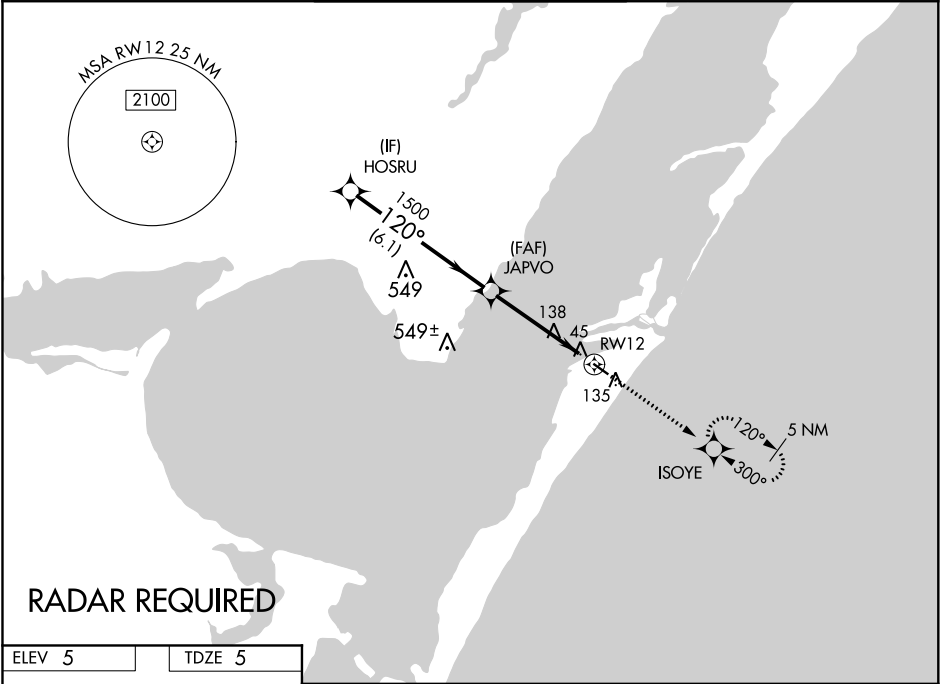
MUSTANG BEACH (RAS)

⚠

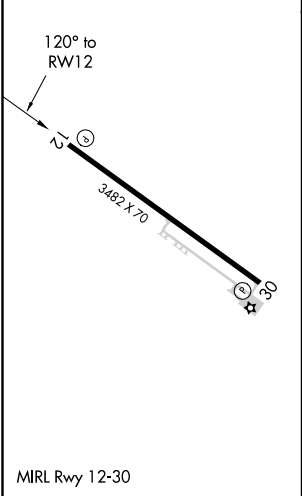
DME/DME RNP-0.3 NA. For uncompensated Baro-VNAV systems, LNAV/VNAV NA below -15°C (5°F) or above 44°C (111°F). If local altimeter setting not received, use Corpus Christi Intl altimeter setting and increase all DAs/MDAs 60 feet. Baro-VNAV and VDP NA when using Corpus Christi Intl altimeter setting.

MISSED APPROACH: Climb to 2000 direct ISOYE and hold.

AWOS-3 118.425	CORPUS CHRISTI APP CON 125.4 307.9	CTAF 122.9
--------------------------	--	----------------------



ELEV 5	TDZE 5
--------	--------



HOSRU		JAPVO		ISOYE	
3000		120°		2000	
Procedure Turn NA		1500		ISOYE	
GP 3.00°		* 1.1 NM to RWY 12		RWY 12	
TCH 35		6.1 NM		3.4 NM	
		1.1 NM			
CATEGORY	A	B	C	D	
LPV DA	276-1	271 (300-1)	NA		
LNAV/VNAV DA	435-1½	430 (500-1½)	NA		
LNAV MDA	400-1	395 (400-1)	NA		
CIRCLING	500-1	495 (500-1)	NA		