

WAAS Ch 82601 W31A	APP CRS 313°	Rwy Idg 5000 TDZE 18 Apt Elev 18
--	------------------------	---

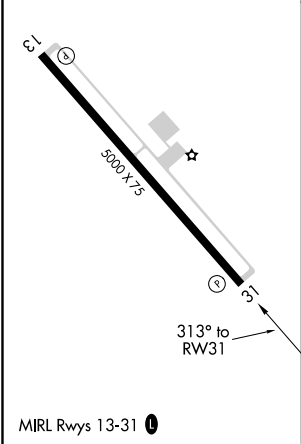
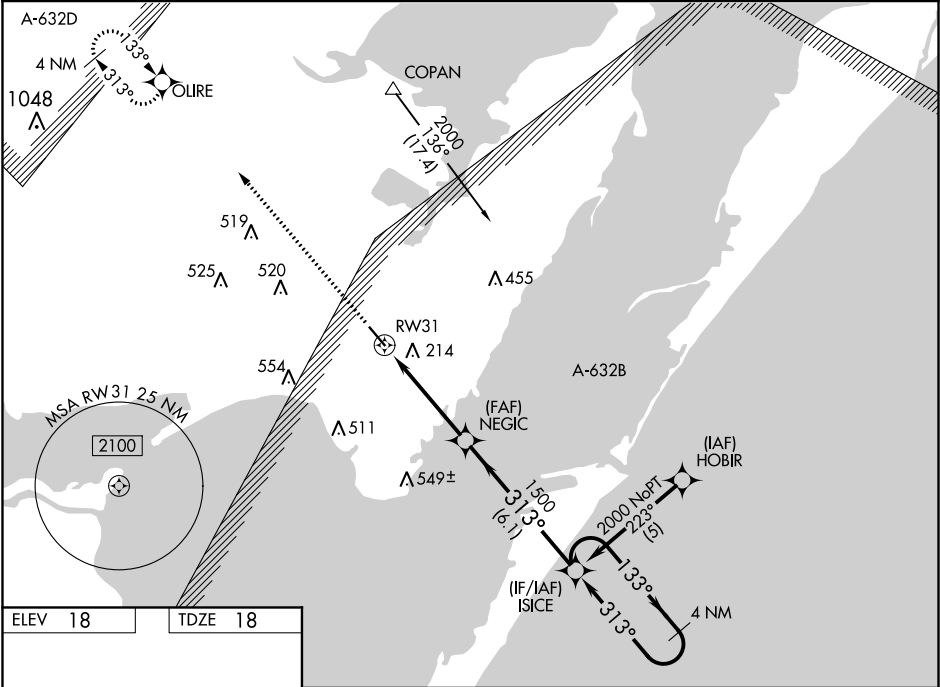
RNAV (GPS) RWY 31
MCCAMPBELL-PORTER (TFP)

A BARO-VNAV NA when using Mustang Beach altimeter setting. For uncompensated BARO-VNAV systems, LNAV/VNAV NA below -15°C (5°F) or above 48°C (118°F).

W When local altimeter setting not received, use Mustang Beach altimeter setting and increase LPV DA to 291 feet; LNAV/VNAV DA to 533 feet; and all MDAs 40 feet; increase LNAV Cat C visibility ¼ mile. VDP NA when using Mustang Beach altimeter setting. DME/DME RNP-0.3 NA.

MISSED APPROACH:
Climb to 2100 direct
OLIRE and hold.

AWOS-3 118.775	CORPUS APP CON 120.9 348.725	UNICOM 122.7 (CTAF) 0
--------------------------	--	---------------------------------



2100 ↑	OLIRE ✱	VGSI and descent angles not coincident (VGSI Angle 3.00/TCH 33).		4 NM Holding Pattern	
*LNAV only		ISICE			
* 1.3 NM to RW31		NEGIC	313°	133° →	2000
RW31			1500	← 313°	GP 3.00° TCH 40
1.3 NM		3.1 NM	6.1 NM		
CATEGORY	A	B	C	D	
LPV DA	268-1		250 (300-1)		
LNAV/ VNAV DA	510-1¾		492 (500-1¾)		
LNAV MDA	480-1	462 (500-1)	480-1¼ 462 (500-1¼)	480-1½ 462 (500-1½)	
CIRCLING	520-1	502 (600-1)	520-1½ 502 (600-1½)	580-2 562 (600-2)	

SC-3, 03 DEC 2020 to 31 DEC 2020

SC-3, 03 DEC 2020 to 31 DEC 2020