

WAAS  
CH **77901**  
**W14A**

APP CRS  
**138°**

Rwy Idg  
TDZE **75**  
Apt Elev **75**

**RNAV (GPS) RWY 14**

SOUTH TEXAS INTL AT EDINBURG (EBG)

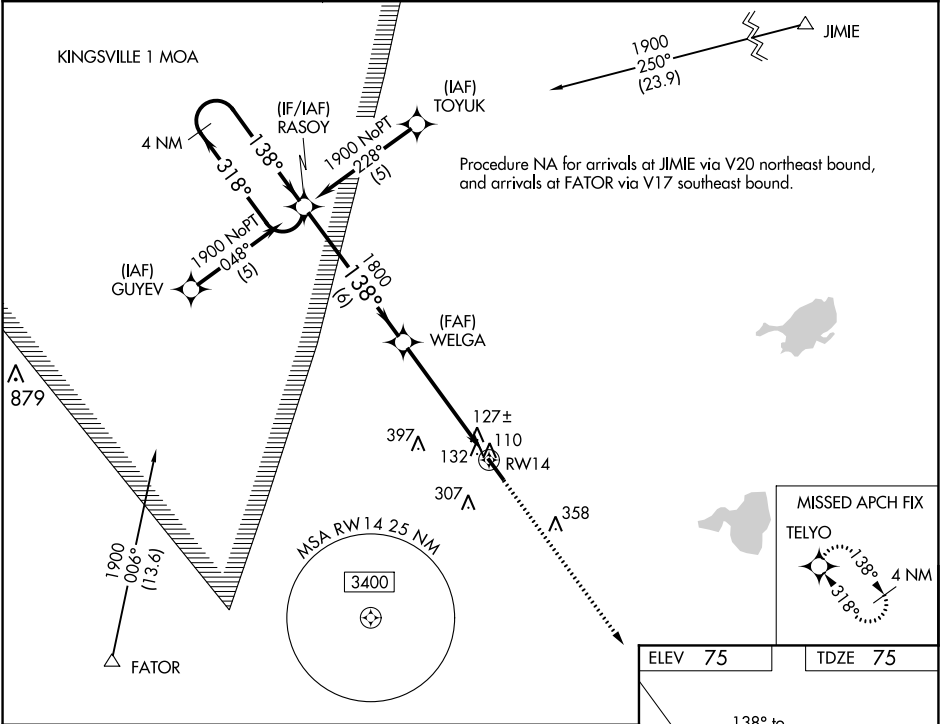
Visibility reduction by helicopters NA. DME/DME RNP-0.3 NA. For uncompensated Baro-VNAV systems, LNAV/VNAV NA below -15°C (5°F) or above 48°C (120°F).

MISSED APPROACH: Climb to 1900 direct TELYO and hold.

AWOS-3  
**118.025**

CORPUS APP CON  
**121.0 377.2**

UNICOM  
**122.8** (CTAF)



4 NM Holding Pattern

VGSi and RNAV glidepath not coincident (VGSi Angle 3.00/TCH 42).

1900 TELYO

1900

318°

138°

GP 3.00° TCH 45

138°

1800

6 NM

5.2 NM

RW14

CATEGORY	A	B	C	D
LPV DA		325-1	250 (300-1)	
LNAV/VNAV DA		441-1¼	366 (400-1¼)	
LNAV MDA		440-1	365 (400-1)	440-1¼ 365 (400-1¼)
CIRCLING	500-1¼ 425 (500-1¼)	540-1¼ 465 (500-1¼)	620-1½ 545 (600-1½)	640-2 565 (600-2)

MIRL Rwy 14-32

REIL Rwy 14