

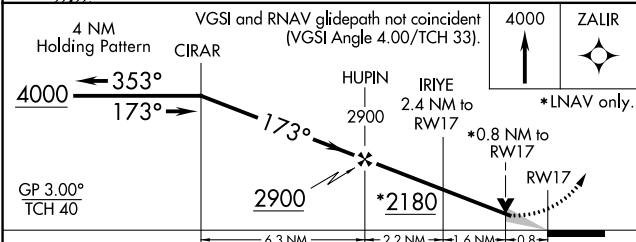
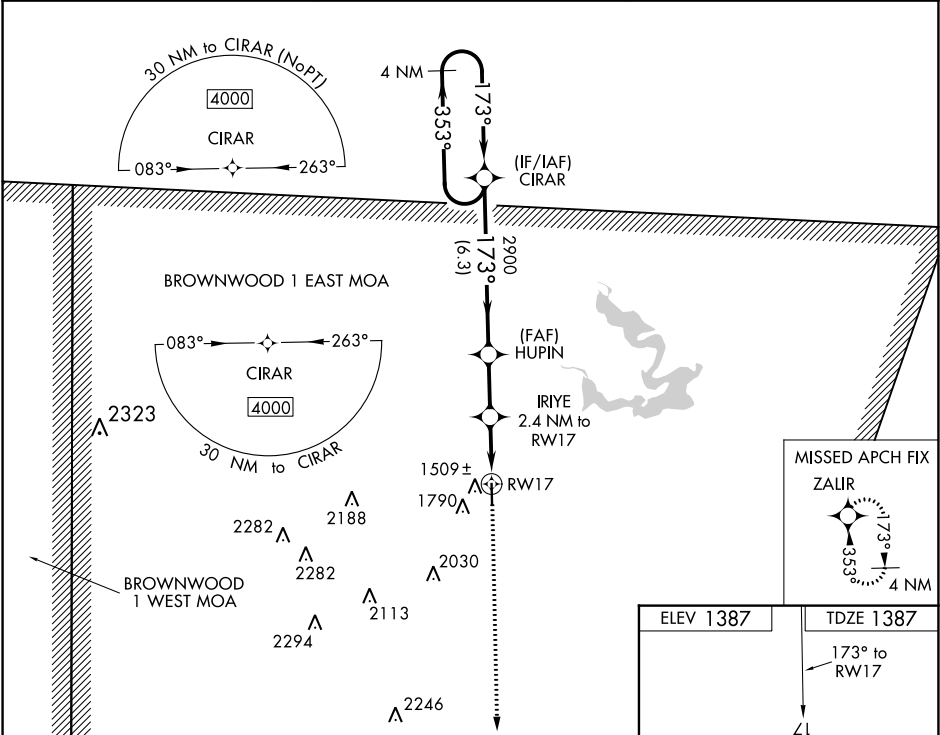
WAAS CH 97436 W17A	APP CRS 173°	Rwy Idg TDZE Apt Elev	4497 1387 1387
--	------------------------	-----------------------------	---

RNAV (GPS) RWY 17
COMANCHE COUNTY-CITY (MKN)

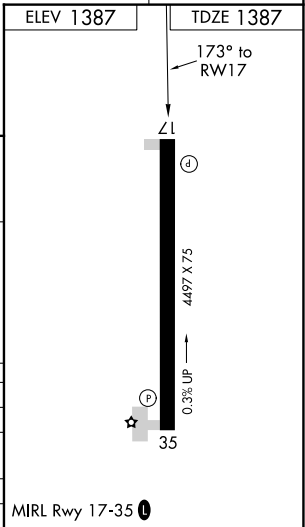
⚠ Night landing: Rwy 35 NA. DME/DME RNP-0.3 NA. When local altimeter setting is not received, use Brownwood altimeter setting: increase all DA 46 feet and all MDA 60 feet, increase LNAV/VNAV visibility all Cats ½ mile. Baro-VNAV and VDP NA when using Brownwood altimeter setting. For uncompensated Baro-VNAV systems, LNAV/VNAV NA below -17°C (2°F) or above 54°C (130°F).

⚠ MISSED APPROACH: Climb to 4000 direct ZAIR and hold.

AWOS-3 118.575	FORT WORTH CENTER 127.15 314.0	UNICOM 123.075 (CTAF)
--------------------------	--	---------------------------------



CATEGORY	A	B	C	D
LPV DA	1637-1	250 (300-1)		NA
LNAV/VNAV DA	1686-1	299 (300-1)		NA
LNAV MDA	1760-1	373 (400-1)		NA
C CIRCLING	2100-1	713 (800-1)		NA



SC-3, 03 DEC 2020 to 31 DEC 2020

SC-3, 03 DEC 2020 to 31 DEC 2020