

WAAS CH 97430 W13A	APP CRS 129°	Rwy Idg 3700 TDZE 80 Apt Elev 80
--	------------------------	---

RNAV (GPS) RWY 13

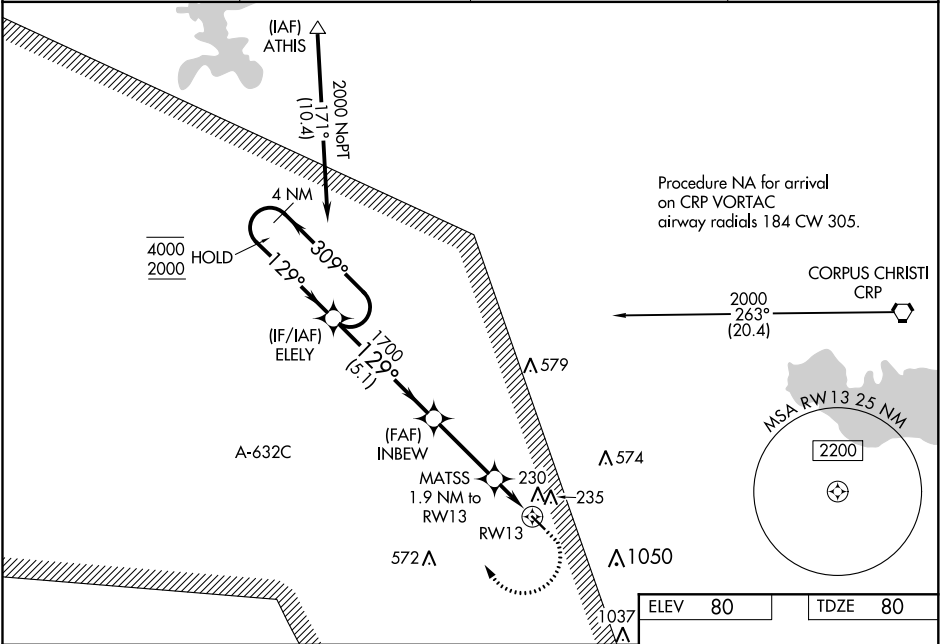
NUECES COUNTY (RBO)

RNP APCH.

⚠ Circling NA northeast of Rwy 13-31. Procedure NA at night. Baro-VNAV and VDP NA when using Corpus Christi Intl altimeter setting. For uncompensated Baro-VNAV systems, LNAV/VNAV NA below -15°C or above 54°C. When local altimeter setting not received, use Corpus Christi Intl altimeter setting and increase LPV DA to 358 feet, LNAV/VNAV DA to 400 feet and all MDA 40 feet.

⚠ MISSED APPROACH: Climb to 540 then climbing right turn to 2000 direct ELEY and hold.

AWOS-3 118.175	KINGSVILLE APP CON ★ 119.9 290.45	CTAF 122.9	122.8 0
--------------------------	---	----------------------	----------------



4 NM Holding Pattern

ELEY

INBEW

GP 3.00° TCH 40

5.1 NM

3.1 NM

0.8 NM

1.1 NM

MATSS 1.9 NM to RWY 13

*1.1 NM to RWY 13

RWY 13

*LNAV only.

129° to RWY 13

3700 X 75

CATEGORY	A	B	C	D
LPV DA	330-1	250 (300-1)	NA	
LNAV/VNAV DA	372-1	292 (300-1)	NA	
LNAV MDA	480-1	400 (400-1)	NA	
CIRCLING	540-1 460 (500-1)	640-1 560 (600-1)	NA	

ELEV 80

TDZE 80

MIRL Rwy 13-31 0