

WAAS CH 49108 W35A	APP CRS 353°	Rwy Idg 4605 TDZE 1823 Apt Elev 1827
--	------------------------	---

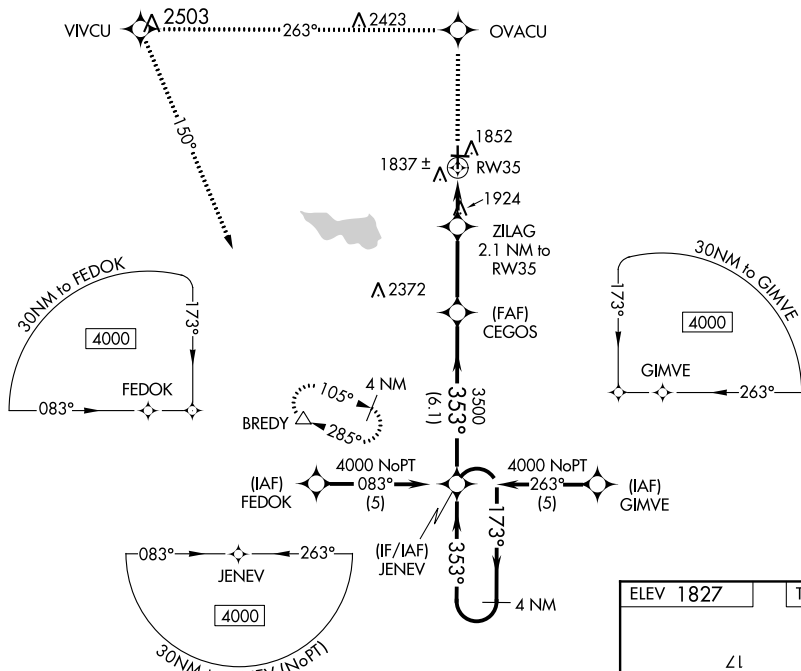
RNAV (GPS) RWY 35
CURTIS FIELD (BBD)

RNP APCH

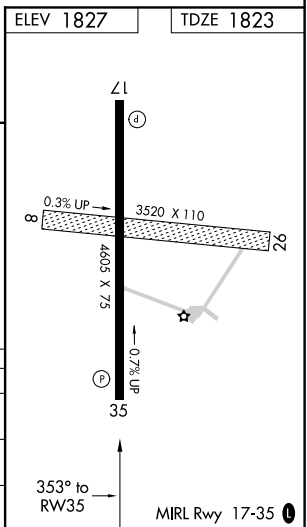
V For uncompensated Baro-VNAV systems, LNAV/VNAV NA below -18°C (0°F) or above 54°C (130°F). When local altimeter setting not received, use Junction altimeter setting and increase all DA/MDA 120 feet, increase LPV, LNAV/VNAV all Cats visibility ½ mile, LNAV Cat C visibility ¼ mile. Baro-VNAV NA when using Junction altimeter setting. Rwy 35 helicopter visibility reduction below ¾ SM NA.

MISSED APPROACH: Climb to 4000 direct OVACU and via 263° track to VIVCU and left turn via 150° track to BREDY and hold.

AWOS-3 118.375	HOUSTON CENTER 132.35 317.5	UNICOM 122.8 (CTAF) 0
--------------------------	---------------------------------------	---------------------------------



4000 ↑	OVACU ✱	tr 263° ✱	VIVCU ✱	tr 150° ↘	BREDY △	JENEV	4 NM Holding Pattern
*LNAV only.							
ZILAG 2.1 NM to RW35		CEGOS		173° → 4000 ← 353°			
RW35		2500*		3500		GP 3.00° TCH 48	
2.1 NM		3 NM		6.1 NM			
CATEGORY	A	B		C		D	
LPV DA	2073-1 250 (300-1)				NA		
LNAV/ VNAV	DA	2107-1 284 (300-1)				NA	
LNAV MDA	2240-1 417 (500-1)	2240-1¼ 417 (500-1¼)				NA	



RNAV (GPS) RWY 35