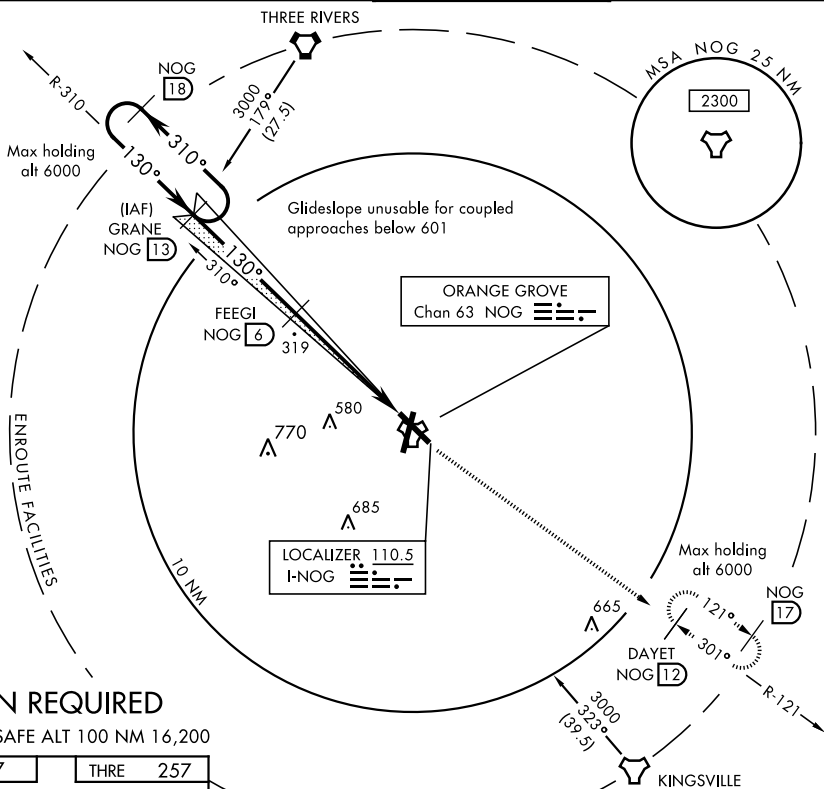


LOC I-NOG <u>110.5</u>	APCH CRS 130°	Rwy Idg 8001 THRE 257 Arpt Elev 257	AL-6553 [USN]	ORANGE GROVE NALF (KNOG)
---------------------------	-------------------------	--	---------------	--------------------------

MISSED APPROACH: Climb to 3000 via NOG TACAN R-121 to DAYET and hold.

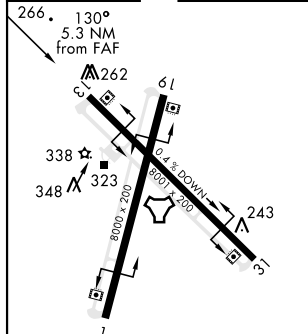
<p>ATIS ★</p> <p>254.35</p>	<p>KINGSVILLE APP CON</p> <p>119.90 290.45</p>	<p>ORANGE GROVE TOWER ★</p> <p>281.425 318.85</p>	<p>GND CON</p> <p>229.4</p>
------------------------------------	---	--	------------------------------------



TACAN REQUIRED

EMERG SAFE ALT 100 NM 16,200

ELEV 257		THRE 257
----------	--	----------



MIRL all Rwy

CATEGORY	A	B	C	D
S-ILS 13		457- $\frac{3}{4}$	200	(200- $\frac{3}{4}$)
S-LOC 13		580-1	323	(400-1)
C CIRCLING	660-1 403 (500-1)	720-1 463 (500-1)	920- $\frac{1}{4}$ 663 (700- $\frac{1}{4}$)	1000-2 $\frac{1}{2}$ 743 (800-2 $\frac{1}{2}$)

ORANGE GROVE, TEXAS

27°54'N-98°03'W

ORANGE GROVE NALF (KNOG)

ILS or LOC/DME RWY 13

SC-3, 03 DEC 2020 to 31 DEC 2020

SC-3, 03 DEC 2020 to 31 DEC 2020