

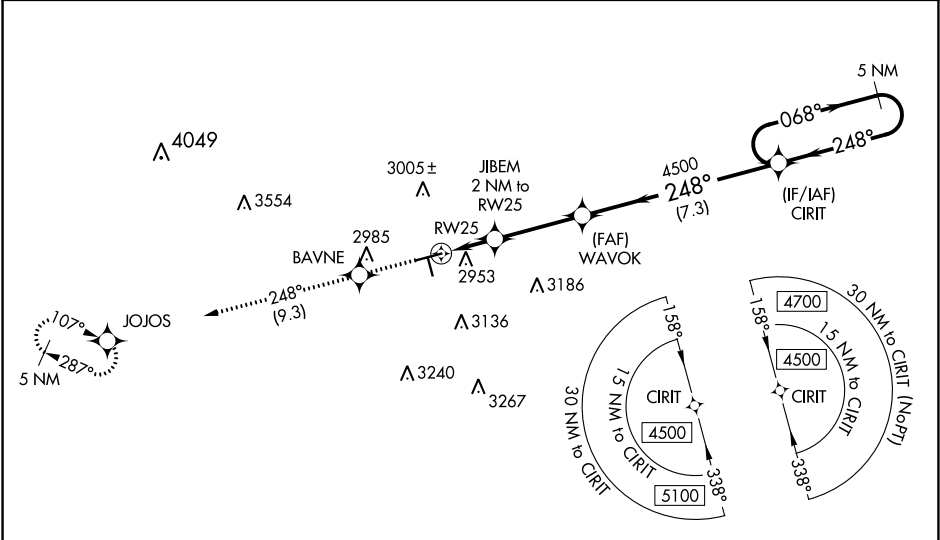
WAAS CH 72923 W25A	APP CRS 248°	Rwy Idg TDZE Apt Elev	5571 2800 2805
--	------------------------	-----------------------------	---

RNAV (GPS) RWY 25
MIDLAND AIRPARK (MDD)

⚠ Baro-VNAV NA when using Midland Intl Air and Space Port altimeter setting.
For uncompensated Baro-VNAV systems, LNAV/VNAV NA below -20°C (-4°F) or above 26°C (78°F). When local altimeter setting not received, use Midland Intl Air and Space Port altimeter setting and increase all DA 28 feet, all MDA 40 feet, increase LNAV/VNAV all Cats and LNAV Cat C/D visibility ½ mile. When VGSI inop, Straight-in/Circling Rwy 25 procedure NA at night. DME/DME RNP-0.3 NA. Helicopter visibility reduction below 1 SM NA.

MISSED APPROACH: Climb to 5000 direct BAVNE and on 248° track to JOJOS and hold.

AWOS-3 118.125	MIDLAND APP CON ★ 124.6 290.4	CLNC DEL 121.8	UNICOM 122.7 (CTAF) ①
--------------------------	---	--------------------------	---------------------------------



ELEV 2805 **D** **TDZE 2800**

5000 **BAVNE** **248° tr** **JOJOS** **VGSI and RNAV glidepath not coincident (VGSI Angle 3.00/TCH 53).** **5 NM Holding Pattern**

*** LNAV only** **JIBEM 2 NM to RW25** **4500** **248°** **068°** **4500** **GP 3.00° TCH 47**

3460* **3460*** **3460***

2 NM **3.2 NM** **7.3 NM**

CATEGORY	A	B	C	D
LPV DA	3081-1 281 (300-1)			
LNAV/VNAV DA	3144-1 1/8 344 (400-1 1/8)			
LNAV MDA	3220-1 420 (500-1)	3220-1 1/4 420 (500-1 1/4)		
CIRCLING	3320-1 515 (600-1)	3320-1 1/2 515 (600-1 1/2)	3700-3 895 (900-3)	

MIRL Rwy 7-25 and 16-34 ①

The inset chart shows the airport layout with runway 25, taxiway 25, and other features. It includes a 5 NM holding pattern at 068°/248°.

SC-3, 03 DEC 2020 to 31 DEC 2020

SC-3, 03 DEC 2020 to 31 DEC 2020