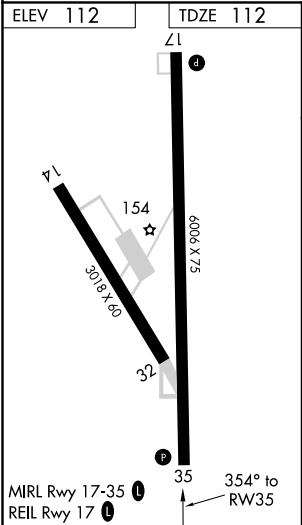
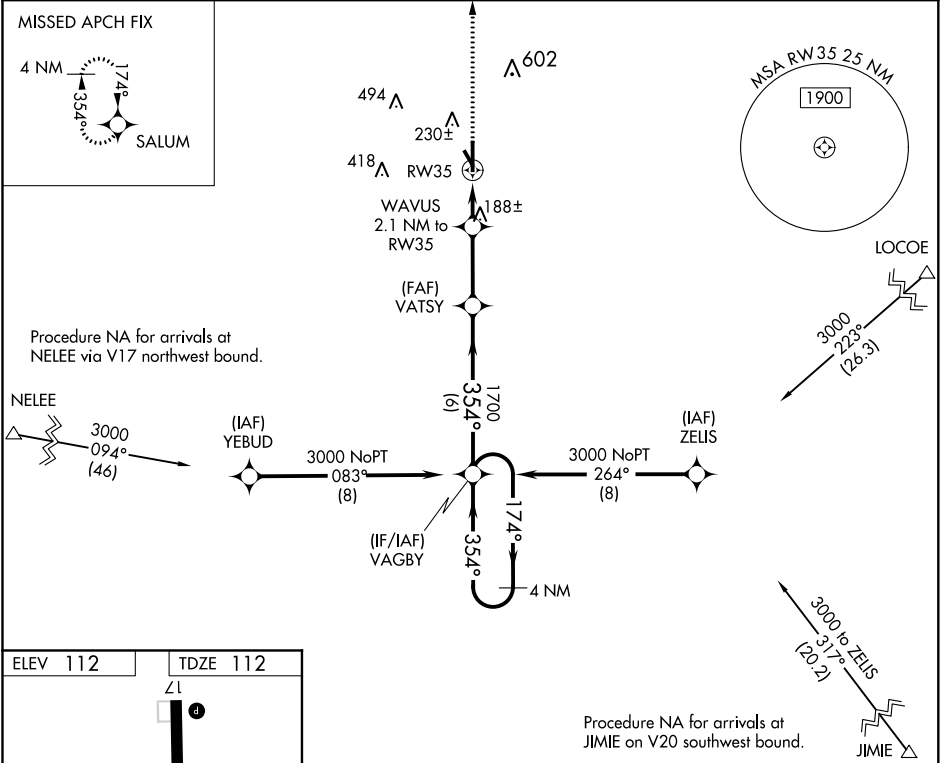


WAAS CH 49140 W35A	APP CRS 354°	Rwy Idg TDZE 112 Apt Elev 112	6006
--	------------------------	---	-------------

RNAV (GPS) RWY 35
BROOKS COUNTY (BKS)

<div><div><div></div><div>T</div></div></div> <div>For uncompensated Baro-VNAV systems, LNAV/VNAV NA below -15°C (5°F) or above 54°C (130°F). Circling Rwy 14 NA at night. DME/DME RNP-0.3 NA.</div>	MISSED APPROACH: Climb to 3000 direct SALUM and hold.	
AWOS-3 118.125	KINGSVILLE APP CON ★ 119.9 290.45	UNICOM 122.8 (CTAF) 0



3000	SALUM	WAVUS 2.1 NM to RW35	VATSY 1700	VAGBY	4 NM Holding Pattern
*LNAV only.	*0.9 NM to RW35	*820	1700	354°	174° → 3000
0.9	1.2	2.8 NM	6 NM		GP 3.00° TCH 45
CATEGORY	A	B	C	D	
LPV DA		362-1	250 (300-1)		
LNAV/VNAV DA		362-1	250 (300-1)		
LNAV MDA		440-1	328 (400-1)		
CIRCLING	580-1 468 (500-1)	680-1 568 (600-1)	940-2½ 828 (900-2½)	940-2¾ 828 (900-2¾)	

SC-3, 03 DEC 2020 to 31 DEC 2020

SC-3, 03 DEC 2020 to 31 DEC 2020