

WAAS  
CH **81831**  
**W15A**

APP CRS  
**157°**

Rwy Idg  
TDZE **1230**  
Apt Elev **1230**

**RNAV (GPS) RWY 15**

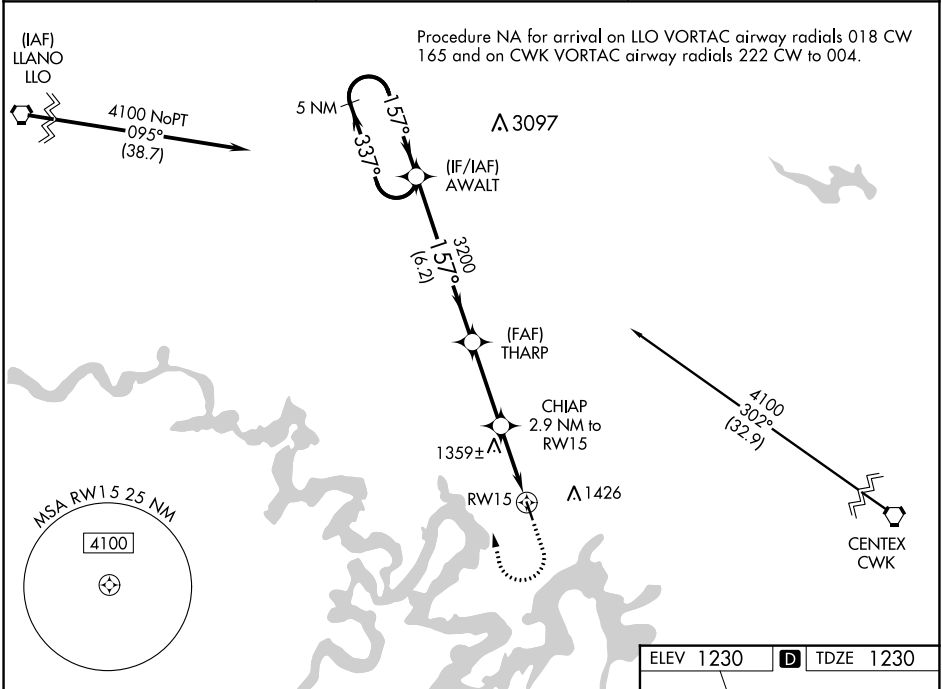
LAGO VISTA TX-RUSTY ALLEN (RYW)

▼

For uncompensated Baro-VNAV systems, LNAV/VNAV NA below -17°C (2°F) or above 54°C (130°F). DME/DME RNP-0.3 NA.  
Rwy 15 helicopter visibility reduction below ¾ SM NA.

MISSED APPROACH: Climb to 1700 then climbing right turn to 4100 direct AWALT and hold.

ASOS <b>119.375</b>	AUSTIN APP CON <b>119.0 370.85</b>	UNICOM <b>122.725 (CTAF) 0</b>
------------------------	---------------------------------------	-----------------------------------



VGSI and RNAV glidepath not coincident (VGSI Angle 4.00/TCH 56).

1700 4100 AWALT

5 NM Holding Pattern

AWALT

THARP 3200

CHIAP 2.9 NM to RW15

\*0.8 NM to RW15

\*2180

GP 3.00° TCH 40

6.2 NM 3.2 NM 2.1 NM 0.8

\*LNAV only.

CATEGORY

A

B

C

D

LPV DA

1480-1

250 (300-1)

NA

LNAV/VNAV DA

1641-1⅜

411 (500-1⅜)

NA

LNAV MDA

1620-1

390 (400-1)

NA

CIRCLING

1660-1  
430 (500-1)

1860-1  
630 (700-1)

NA

ELEV 1230 D TDZE 1230

157° to RW15

3008 x 350

0.63° UP

33

MIRL Rwy 15-33 0