

WAAS CH 86435	APP CRS 308°	Rwy Idg TDZE Apt Elev	6503 646 658
W31A			

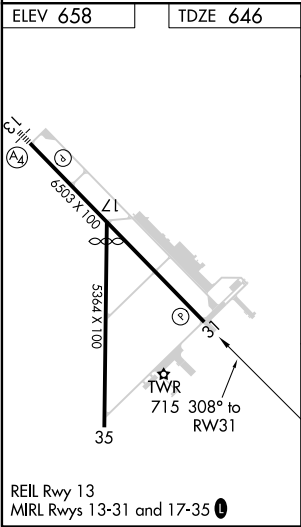
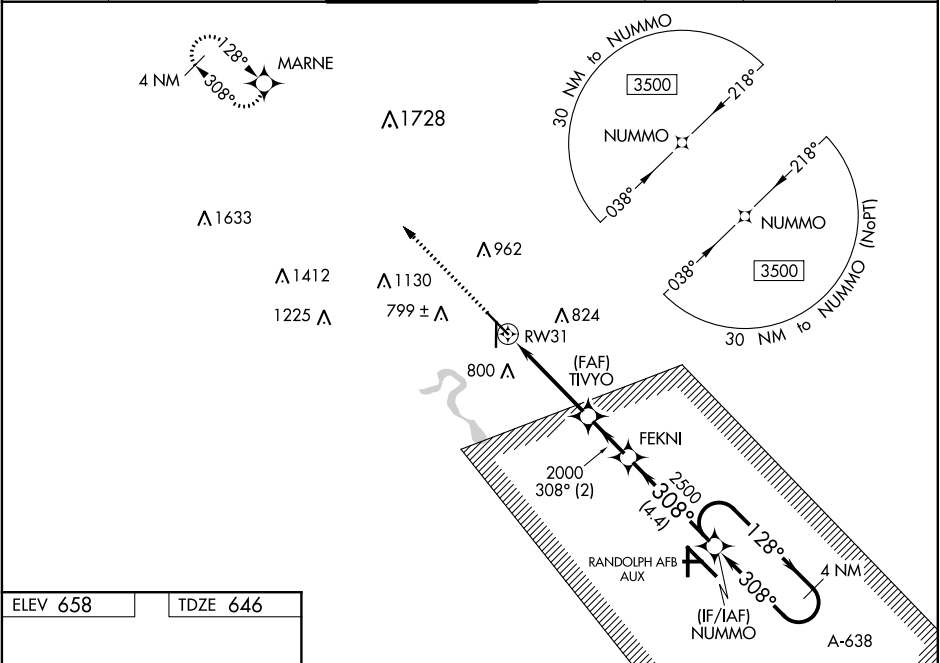
RNAV (GPS) RWY 31

NEW BRAUNFELS RGNL (BAZ)

⚠ DME/DME RNP-0.3 NA. When local altimeter setting not received, use San Marcos altimeter setting and increase all DA 43 feet and all MDA 60 feet, and increase LPV all Cats, LNAV/VNAV all Cats, and Circling Cats C and D visibility $\frac{1}{4}$ mile, and LNAV Cats C and D visibility $\frac{1}{8}$ mile. For uncompensated Baro-VNAV systems, LNAV/VNAV NA below -5°C (23°F) or above 54°C (130°F). Baro-VNAV and VDP NA when using San Marcos altimeter setting. Helicopter visibility reduction below $\frac{3}{4}$ SM NA.

MISSED APPROACH:
Climb to 3100 direct MARNE and hold.

ATIS 119.325	SAN ANTONIO APP CON 124.45 335.625	NEW BRAUNFELS TOWER* 127.05 285.4	GND CON 120.175	CLNC DEL 134.75	UNICOM 122.7	CTAF 127.05 0
------------------------	----------------------------------------------	---------------------------------------------	---------------------------	---------------------------	------------------------	-------------------------



	3100	MARNE	VGSI and RNAV glidepath not coincident (VGSI Angle 3.00°/TCH 50°).			
				NUMMO	4 NM	Holding Pattern
* LNAV only.				FEKNI		
				TIVYO	2000	
				RW31	2000	
					2500	
					308°	
					128°	
					3500	
					GP 3.00°	
					TCH 45°	
					1.2 NM	
					2.9 NM	
					2 NM	
					4.4 NM	
CATEGORY	A	B	C	D		
LPV DA	896- $\frac{3}{4}$		250 (300- $\frac{3}{4}$)			
LNAV/VNAV DA	1068-1 $\frac{3}{4}$		422 (500-1 $\frac{3}{4}$)			
LNAV MDA	1080-1	434 (500-1)	1080-1 $\frac{1}{4}$	434 (500-1 $\frac{1}{4}$)		
CIRCLING	1100-1	1240-1	1280-1 $\frac{3}{4}$	1320-2		
	442 (500-1)	582 (600-1)	622 (700-1 $\frac{3}{4}$)	662 (700-2)		