

APP CRS  
173°

Rwy Idg  
TDZE  
Apt Elev

4842  
651  
658

RNAV (GPS) RWY 17

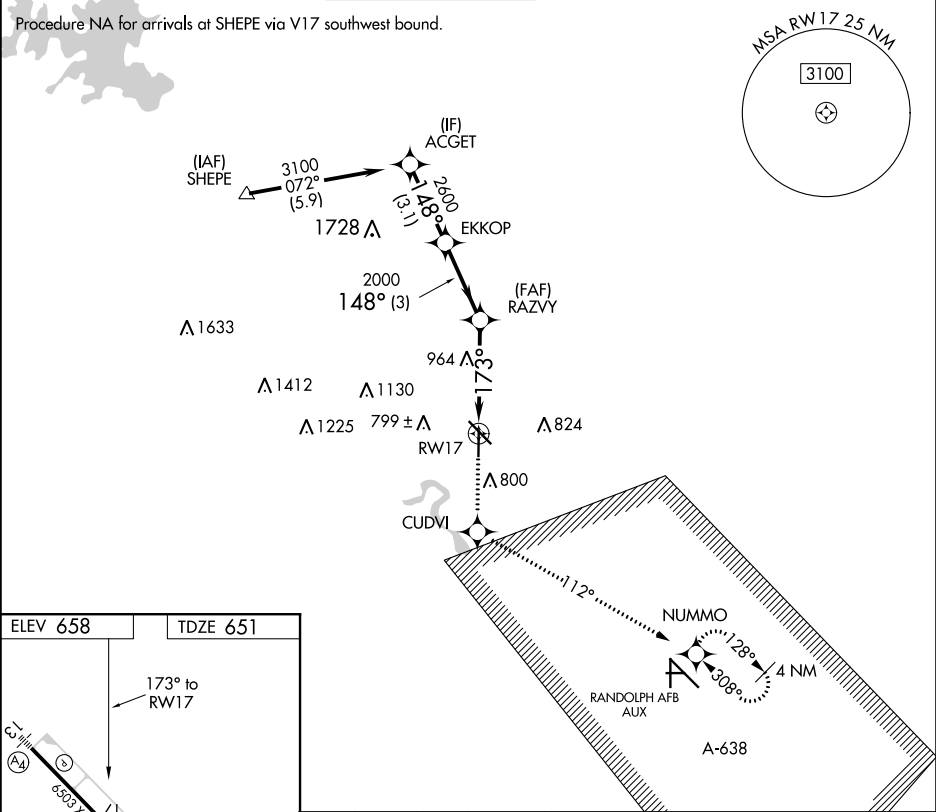
NEW BRAUNFELS RGNL (BAZ)

RNP APCH.

When local altimeter setting not received, use San Marcos Rgnl altimeter setting and increase all MDAs 60 feet and visibility Cat C ¼ SM. VDP NA when using San Marcos Rgnl altimeter setting.

MISSED APPROACH: Climb to 3500 direct CUDVI and via 112° track to NUMMO and hold, continue climb-in-hold to 3500.

ATIS 119.325	SAN ANTONIO APP CON 124.45 335.625	NEW BRAUNFELS TOWER★ 127.05 285.4	GND CON 120.175	CLNC DEL 134.75	UNICOM 122.7	CTAF 127.05 0
-----------------	---------------------------------------	--------------------------------------	--------------------	--------------------	-----------------	------------------



ELEV 658

TDZE 651

173° to RW17

5364 X 100

35

TWR 715

3500

CUDVI

↑

NUMMO

ir 112°

1.6 NM to RW17

3.03°

TCH 45

173°

2000

RAZVY

3 NM

3.1 NM

ACGET

EKKOP

148°

3100

2600

Procedure Turn NA

CATEGORY	A	B	C	D
LNAV MDA	1220-1	569 (600-1)	1220-1½ 569 (600-1½)	1220-1¾ 569 (600-1¾)