

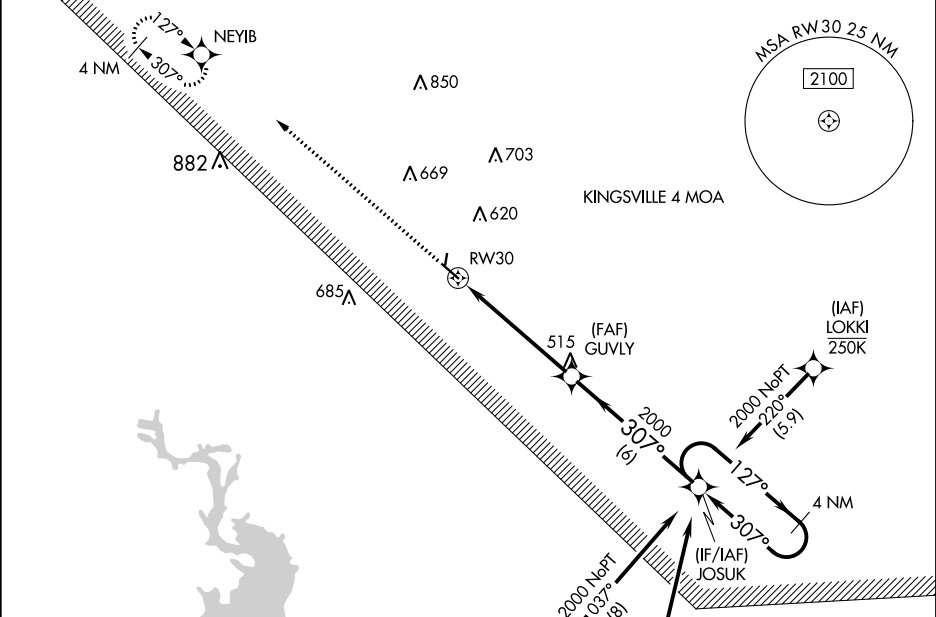
WAAS CH <b>53741</b> <b>W30A</b>	APP CRS <b>307°</b>	Rwy Idg TDZE <b>262</b> Apt Elev <b>273</b>
--	------------------------	---

RNAV (GPS) RWY 30

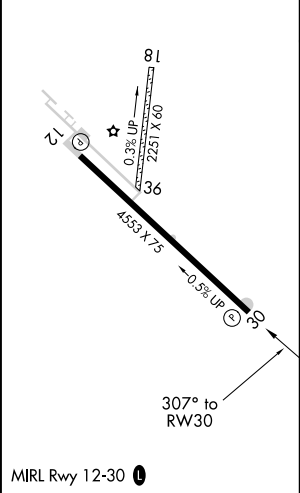
BEEVILLE MUNI (BEA)

RNP APCH. ▼ For uncompensated Baro-VNAV systems, LNAV/VNAV NA below -1.5°C (5°F) or above 54°C (130°F). Circling Rwy 18 and 36 NA at night. ▲ Rwy 30 helicopter visibility reduction below ¾ SM NA.	MISSED APPROACH: Climb to 2000 direct NEYIB and hold.
---	---

AWOS-3 <b>118.675</b>	HOUSTON CENTER <b>134.6 322.5</b>	UNICOM <b>122.8 (CTAF) 0</b>
--------------------------	--------------------------------------	---------------------------------



ELEV 273	TDZE 262
----------	----------



2000	NEYIB	*LNAV only.	GUVLY	2000	JOSUK	4 NM Holding Pattern
		*2.4 NM to RW30				
		2.4 NM	3 NM	6 NM		
CATEGORY	A	B	C	D		
LPV DA	517-1	255 (300-1)		NA		
LNAV/VNAV DA	540-1	278 (300-1)		NA		
LNAV MDA	1060-1 798 (800-1)	1060-1¼ 798 (800-1¼)	1060-2½ 798 (800-2½)	NA		
CIRCLING	1060-1 787 (800-1)	1060-1¼ 787 (800-1¼)	1060-2½ 787 (800-2½)	NA		