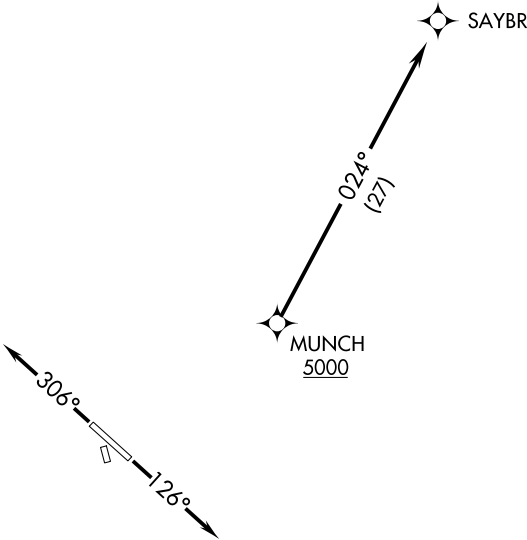


AWOS-3
118.825
CLNC DEL
126.025 when tower closed
EXECUTIVE TOWER ★
120.3 (CTAF)
AUSTIN DEP CON
127.225 317.65

TOP ALTITUDE:
ASSIGNED BY ATC

TAKEOFF MINIMUMS:
Rwys 16, 34: NA-Environmental.
Rwys 13, 31: Standard.



- NOTE: RADAR required.
- NOTE: DME/DME/IRU or GPS required.
- NOTE: RNAV-1
- NOTE: For DFW Terminal Area Arrivals at FL230 or below only.

NOTE: Chart not to scale.



DEPARTURE ROUTE DESCRIPTION

TAKEOFF RWY 13: Climb heading 126° or as assigned by ATC for RADAR vectors to cross MUNCH at or above 5000, thence. . . .
TAKEOFF RWY 31: Climb heading 306° or as assigned by ATC for RADAR vectors to cross MUNCH at or above 5000, thence. . . .
...on track 024° to SAYBR. Maintain altitude assigned by ATC.
Expect filed altitude 10 minutes after departure.

SC-3, 03 DEC 2020 to 31 DEC 2020

SC-3, 03 DEC 2020 to 31 DEC 2020