

| | | | |
|--|------------------------|-----------------------------|---|
| WAAS CH 63116 W13A | APP CRS 126° | Rwy Idg TDZE Apt Elev | 5425 620 620 |
|--|------------------------|-----------------------------|---|

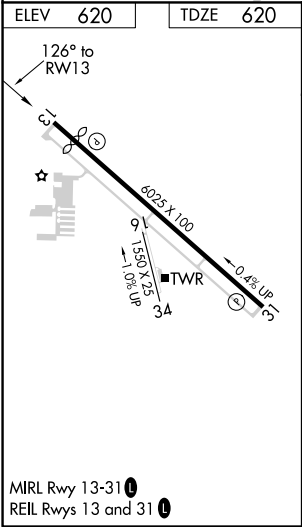
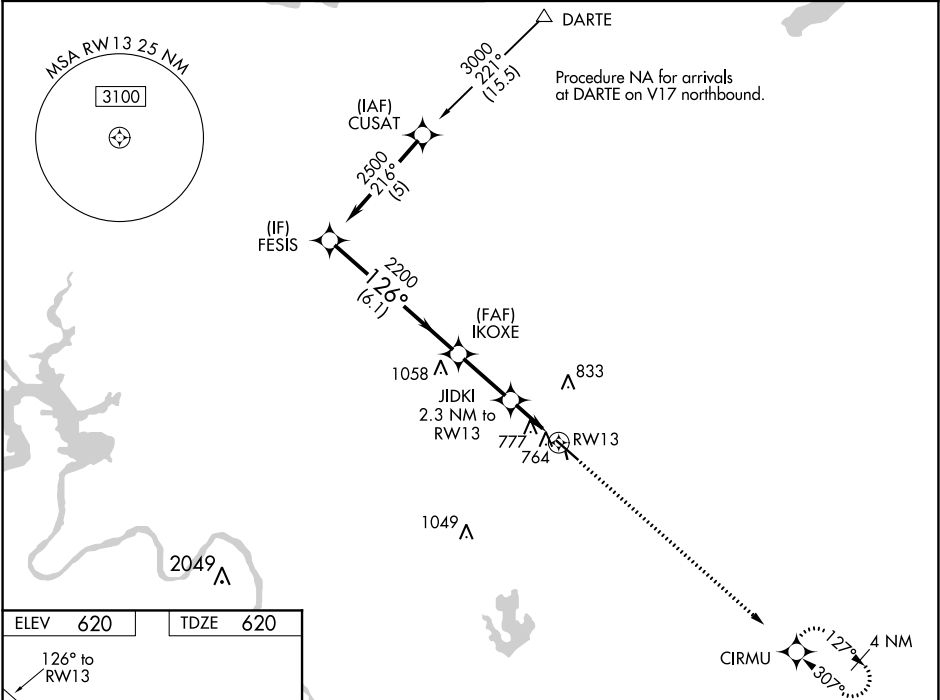
RNAV (GPS) RWY 13
AUSTIN EXECUTIVE (EDC)

RNP APCH.

▼ Baro-VNAV NA when using Austin-Bergstrom Intl altimeter setting. For uncompensated Baro-VNAV systems, LNAV/VNAV NA below -16°C (4°F) or above 47°C (116°F). Visibility reduction by helicopters NA. When local altimeter setting not received, use Austin-Bergstrom Intl altimeter setting: increase LPV DA to 912 feet, increase LNAV/VNAV DA to 1168 feet; increase all MDA 60 feet. VDP NA with Austin-Bergstrom Intl altimeter setting. Circling NA to Rwy 16 and 34.

MISSED APPROACH:
Climb to 2100 direct
CIRMU and hold.

| | | | | | |
|--------------------------|----------------------------------|---|--------------------------|---|--------------------------|
| AWOS-3 118.825 | APP CON 127.225 317.65 | EXECUTIVE TOWER★ 120.3 (CTAF) 0 | GND CON 119.45 | CLNC DEL 126.025 (when tower closed) | UNICOM 122.975 |
|--------------------------|----------------------------------|---|--------------------------|---|--------------------------|



| | | | | |
|--|----------------------|----------------------|----------------------|--------------------|
| <div><div>FESIS</div><div>IKOXE</div><div>JIDKI</div><div>2.3 NM to RW13</div><div>RW13</div></div> <div><div>2500</div><div>2200</div><div>2200</div><div>*1380</div></div> <div><div>126°</div><div>GP 3.00°</div><div>TCH 40</div></div> <div><div>6.1 NM</div><div>2.5 NM</div><div>1 NM</div><div>1.3 NM</div></div> <div><div>2100</div><div>CIRMU</div><div>*LNAV only.</div></div> | | | | |
| CATEGORY | A | B | C | D |
| LPV DA | 870-1 250 (300-1) | | | |
| LNAV/VNAV DA | 1126-1¾ 506 (600-1¾) | | | |
| LNAV MDA | 1080-1 460 (500-1) | 1080-1½ 460 (500-1½) | 1080-1½ 460 (500-1½) | |
| CIRCLING | 1140-1 520 (600-1) | 1160-1 540 (600-1) | 1160-1½ 540 (600-1½) | 1220-2 600 (600-2) |