

WAAS CH 86618 W13A	APP CRS 134°	Rwy Idg TDZE 130 Apt Elev 130
--	------------------------	---

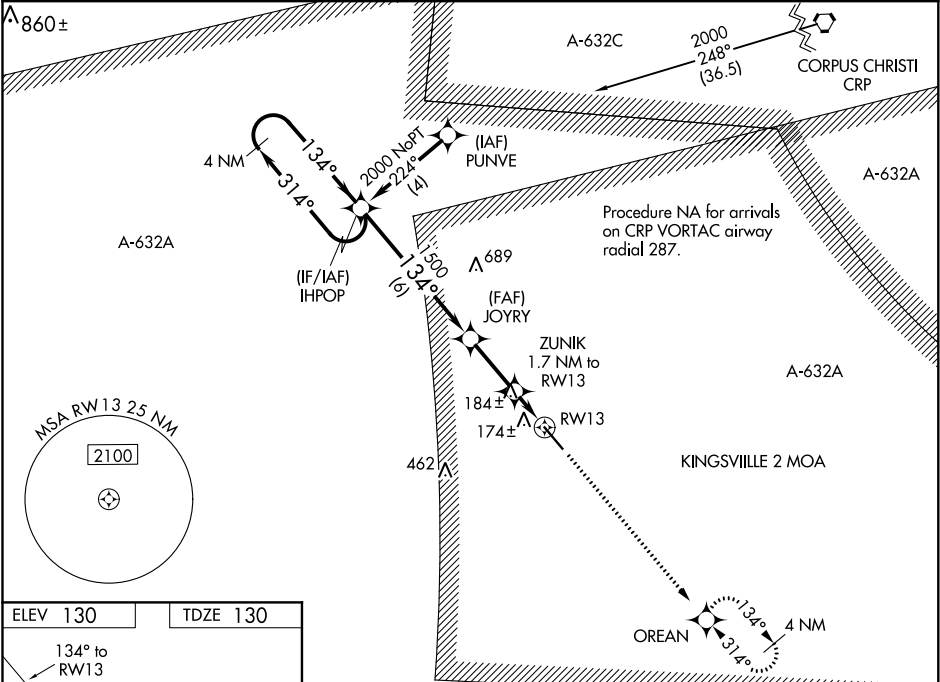
RNAV (GPS) RWY 13
KLEBERG COUNTY (IKG)

NA

For uncompensated Baro-VNAV systems, LNAV/VNAV NA below -15°C (5°F) or above 48°C (118°F). DME/DME RNP-0.3 NA. Visibility reduction by helicopters NA. When local altimeter setting not received, use Alice altimeter setting and increase all DA 33 feet and all MDA 40 feet and LPV all Cats, LNAV/VNAV all Cats, and LNAV Cat D visibility ¼ mile. Baro-VNAV and VDP NA when using Alice altimeter setting.

MISSED APPROACH: Climb to 2000 direct OREAN and hold.

AWOS-3P 119.075	KINGSVILLE APP CON ★ 119.9 290.45	UNICOM 122.7 (CTAF) 0
---------------------------	---	---------------------------------



ELEV **130** TDZE **130**

134° to RWY 13

REIL Rwy 13 and 31 **0**
MIRL Rwy 13-31 **0**

4 NM Holding Pattern		VGSI and RNAV glidepath not coincident (VGSI Angle 3.00/TCH 39).		2000	OREAN
GP 3.00° TCH 42		JOYRY 1500		*LNAV only	
314°		134°		ZUNIK 1.7 NM to RWY 13	
134°		1500		*0.9 NM to RWY 13	
6 NM		2.4 NM		RWY 13	
0.8		0.9			
CATEGORY	A	B	C	D	
LPV DA		380-¾	250 (300-¾)		
LNAV/VNAV DA		444-1	314 (400-1)		
LNAV MDA		440-1	310 (400-1)		
CIRCLING	500-1 370 (400-1)	580-1 450 (500-1)	580-1½ 450 (500-1½)	680-2 550 (600-2)	

SC-3, 03 DEC 2020 to 31 DEC 2020

SC-3, 03 DEC 2020 to 31 DEC 2020