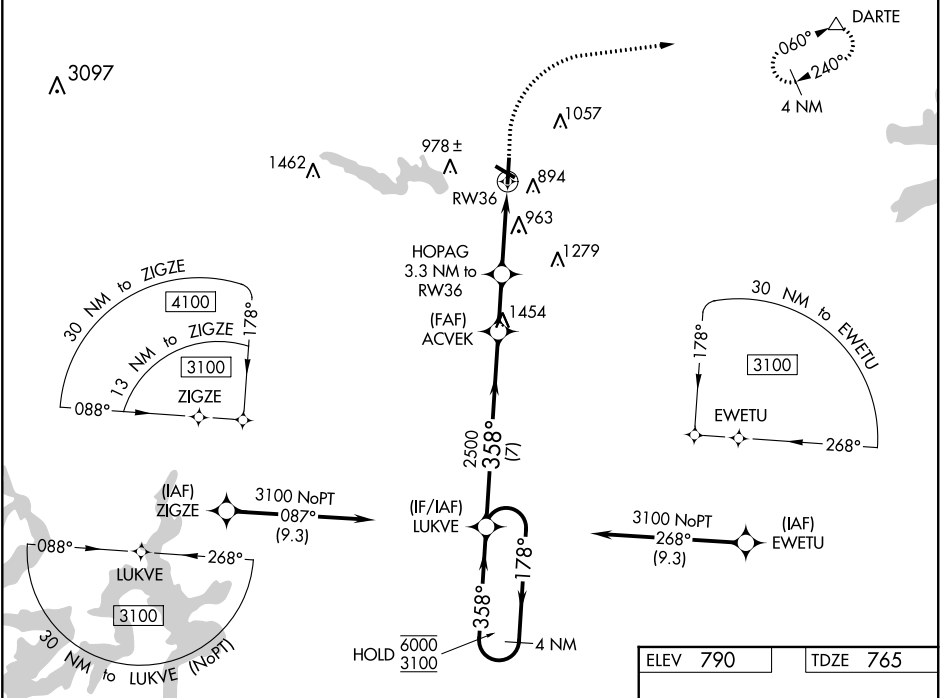


| | | | | | | | |
|-----------|----------------|---|---------|----------|----------------------------|--|--|
| RNP APCH. | | <div><div>▼</div> Circling Rwy 29 NA at night. Rwy 36 helicopter visibility reduction below ¼ SM NA.</div> <div><div>▲</div> For uncompensated Baro-VNAV systems, LNAV/VNAV NA below -16°C or above 54°C.</div> | | | | MISSED APPROACH: Climb to 1300 then climbing right turn to 3000 direct DARTE and hold. | |
| ATIS | AUSTIN APP CON | GEORGETOWN TOWER ★ | GND CON | CLNC DEL | CLNC DEL | UNICOM | |
| 118.6 | 119.0 370.85 | 120.225 (CTAF) 0 | 119.125 | 119.125 | 121.1 (when twr closed) | 123.0 | |



| | | | | |
|----------------------|-----------------------|-----------------------|-------------------------|-------------------------|
| 4 NM Holding Pattern | | 1300 | 3000 | DARTE |
| LUKVE | | ↑ | ↷ | △ |
| 6000 ← 178° | | *LNAV only. | | |
| 3100 → 358° | | | | |
| GP 3.00° TCH 50 | | | | |
| 2500 | | | | |
| ACVEK 2500 | | | | |
| HOPAG 3.3 NM to RW36 | | | | |
| *1.3 NM to RW36 | | | | |
| RW36 | | | | |
| 7 NM | | 2.1 NM | 2 NM | 1.3 NM |
| CATEGORY | A | B | C | D |
| LPV DA | 1015-1 | | 250 (300-1) | |
| LNAV/VNAV DA | 1242-1½ | | 477 (500-1½) | |
| LNAV MDA | 1220-1 | 455 (500-1) | 1220-1½ | 455 (500-1½) |
| ✪ CIRCLING | 1240-1 450 (500-1) | 1340-1 550 (600-1) | 1360-1½ 570 (600-1½) | 1640-2¾ 850 (900-2¾) |

