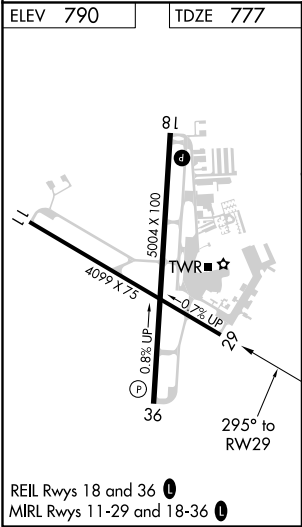
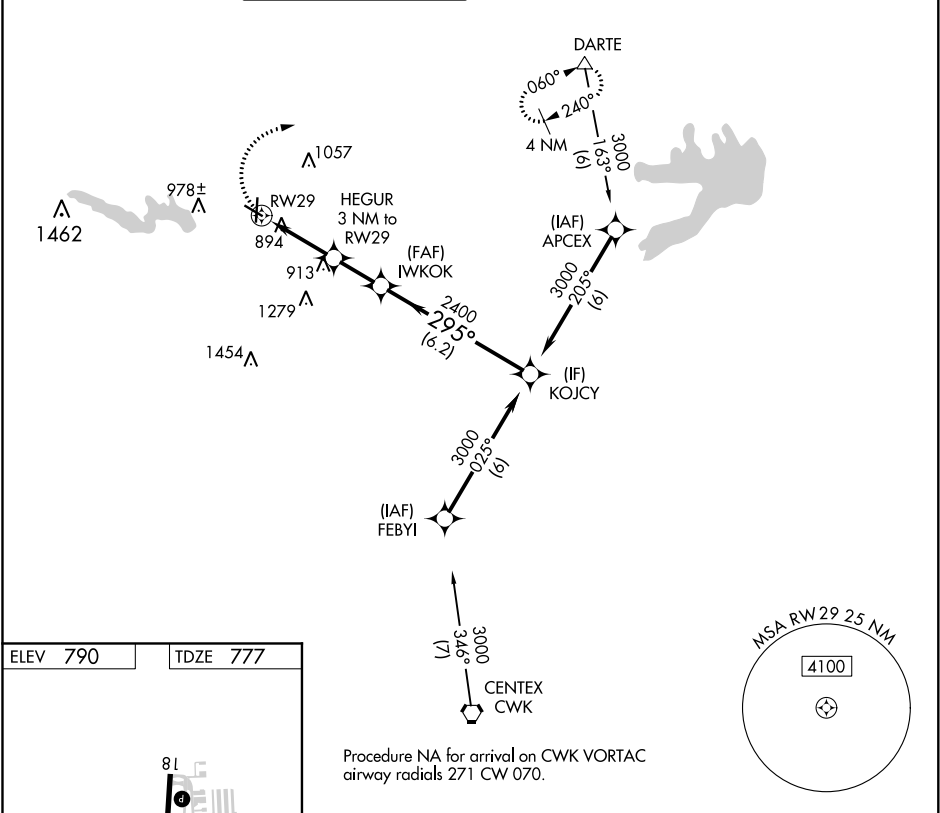





APP CRS	Rwy Idg	4099
295°	TDZE	777
	Apt Elev	790

RNAV (GPS) RWY 29  
GEORGETOWN MUNI (GTU)

RNP APCH.				MISSED APPROACH: Climbing right turn to 3000 direct DARTE and hold.		
▼ Rwy 29 helicopter visibility reduction below ¼ SM NA. VDP NA when using Skylark Field altimeter setting. When local altimeter setting not received, use Skylark Field altimeter setting and increase all MDA 80 feet increase LNAV and Circling Cat C/D visibility ¼ SM.						
ATIS	AUSTIN APP CON	GEORGETOWN TOWER ★	GND CON	CLNC DEL	CLNC DEL	UNICOM
118.6	119.0 370.85	120.225 (CTAF) 0	119.125	119.125	121.1 (when twr closed)	123.0



<div><div>3000</div><div></div></div>		<div>DARTE</div> <div></div>			
<div><div><div><div><div></div><div>RW29</div></div><div><div></div><div>1.2 NM to RW29</div></div><div><div></div><div>1760</div></div></div><div><div></div><div>1.2</div></div><div><div></div><div>1.8</div></div><div><div></div><div>2 NM</div></div><div><div></div><div>6.2 NM</div></div></div></div>		<div><div>HEGUR</div><div>3 NM to RW29</div></div>		<div><div>IWKOK</div><div>2400</div></div>	
<div><div><div></div><div>3.04°</div><div>TCH 40</div></div></div>		<div><div>295°</div><div>3000</div></div>			
CATEGORY		A		B	
LNAV MDA		1220-1 443 (500-1)		1220-1⅓ 443 (500-1⅓)	
<div><div></div>CIRCLING</div>		1240-1 450 (500-1)		1340-1 550 (600-1)	
		1360-1½ 570 (600-1½)		1640-2¾ 850 (900-2¾)	