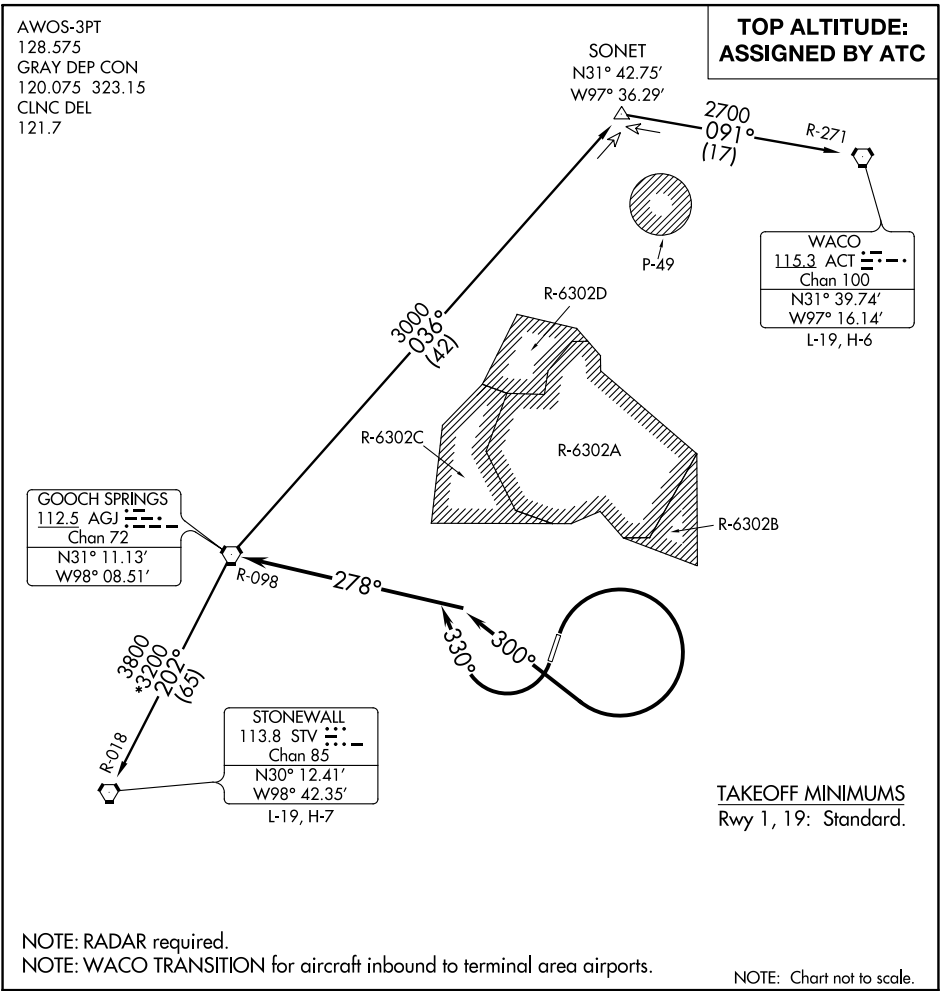


LAMPS SEVEN DEPARTURE



▼

DEPARTURE ROUTE DESCRIPTION

TAKEOFF RWY 1: Climbing right turn heading 300° (to assigned altitude) to intercept and proceed on AGJ R-098. Thence . . . .

TAKEOFF RWY 19: Climbing right turn heading 330° (to assigned altitude) to intercept and proceed on AGJ R-098. Thence . . . .

. . . . on (transition) or (assigned route).

STONEWALL TRANSITION (LAMPS7.STV): From over AGJ VORTAC on AGJ R-202 and STV R-018 to STV VORTAC.

WACO TRANSITION (LAMPS7.ACT): From over AGJ VORTAC on AGJ R-036 to SONET INT, then on ACT R-271 to ACT VORTAC.

SC-3, 03 DEC 2020 to 31 DEC 2020

SC-3, 03 DEC 2020 to 31 DEC 2020