

APP CRS	Rwy Idg	<b>6080</b>
<b>355°</b>	TDZE	<b>40</b>
	Apt Elev	<b>44</b>

RNAV (RNP) Z RWY 36  
CORPUS CHRISTI INTL (CRP)

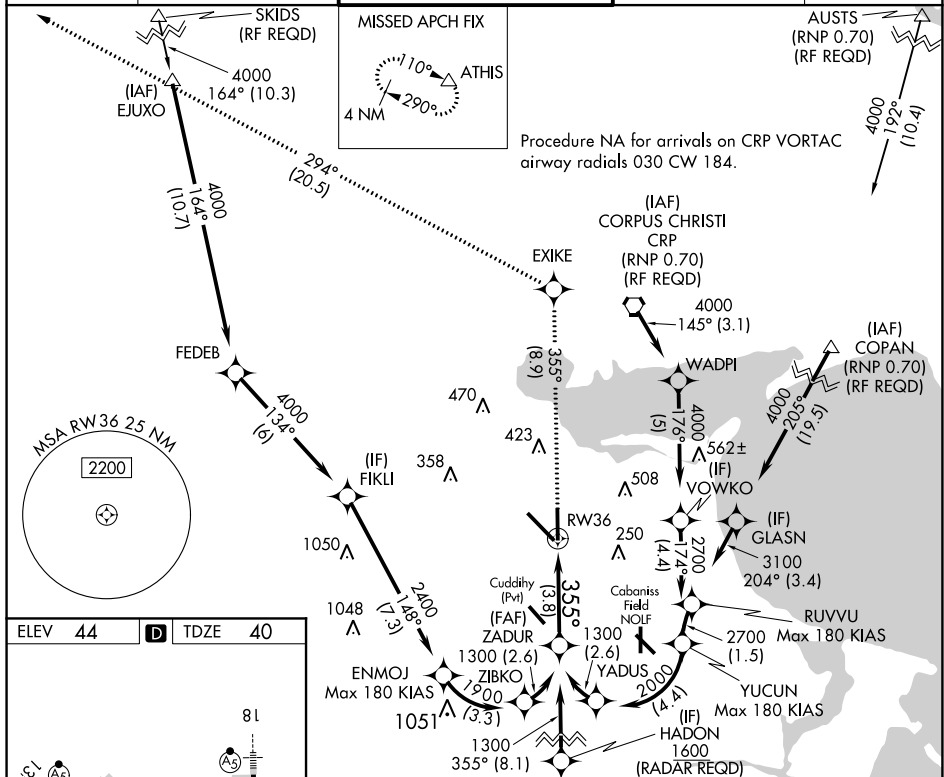
**T** For uncompensated Baro-VNAV systems, procedure NA below -1°C (-31°F) or above 54°C (130°F). GPS required. For inop MALSR, increase RNP 0.11 visibility all Cats to RVR 4000. For inop MALSR, increase RNP 0.30 visibility all Cats to RVR 5900.

MALSR

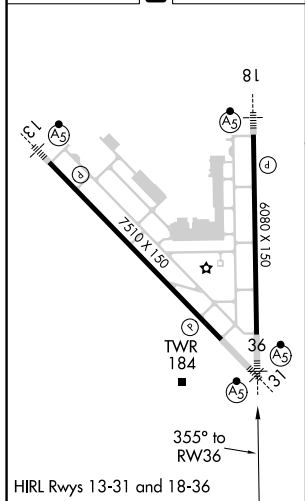


**MISSED APPROACH:** Climb to 2000 on track 355° to EXIKE and on track 294° to ATHIS and hold.

ATIS 126.8	CORPUS APP CON 120.9 348.725	CORPUS TOWER 119.4 257.8	GND CON 121.9 269.15	CLNC DEL 118.55
---------------	---------------------------------	-----------------------------	-------------------------	--------------------



ELEV	44	<b>D</b>	TDZE	40
------	----	----------	------	----



2000  tr 355°		EXIKE  tr 294°		ATHIS 		See Planview for multiple IF locations.		ZADUR 1300	
				355°		1300		GP 3.00° TCH 53	
CATEGORY		A		B		C		D	
RNP 0.11 DA				290/24		250 (300-½)			
RNP 0.30 DA				400/34		360 (400-⅝)			

**AUTHORIZATION REQUIRED**