


APP CRS	Rwy Idg	7510
132°	TDZE	46
	Apt Elev	46

RNAV (RNP) Z RWY 13  
CORPUS CHRISTI INTL (CRP)

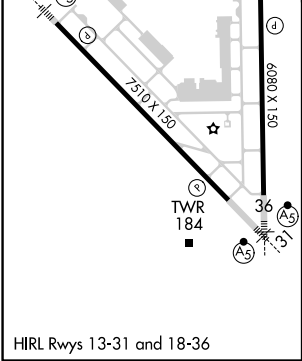
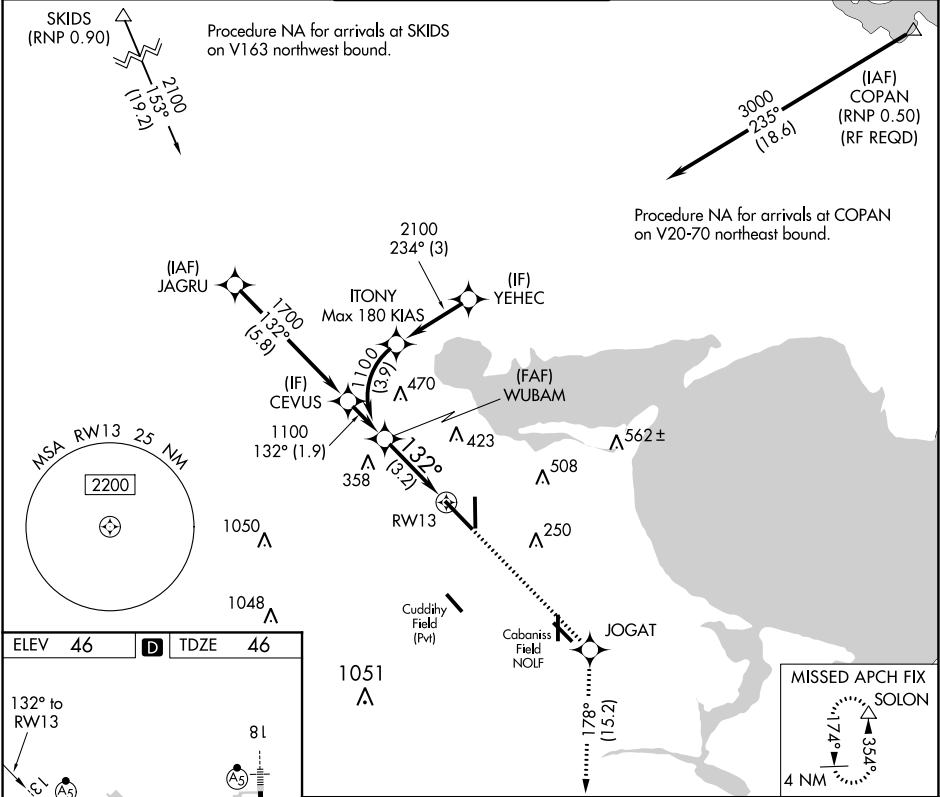
**▼** For uncompensated Baro-VNAV systems, procedure NA below -1°C (31°F) or above 54°C (130°F). GPS required.

**MALSR**



**MISSED APPROACH:** Climb to 2000 on track 132° to JOGAT and on track 178° to SOLON and hold.

ATIS <b>126.8</b>	CORPUS APP CON <b>120.9 348.725</b>	CORPUS TOWER <b>119.4 257.8</b>	GND CON <b>121.9 269.15</b>	CLNC DEL <b>118.55</b>
----------------------	--	------------------------------------	--------------------------------	---------------------------



2000 JOGAT SOLON

tr 132° tr 178°

See planview for multiple IF locations.

WUBAM 1100

1100

132°

3.2 NM

GP 3.00° TCH 50

CATEGORY	A	B	C	D
RNP 0.30 DA	394/30	348 (400-%)		

**AUTHORIZATION REQUIRED**

SC-3, 03 DEC 2020 to 31 DEC 2020

SC-3, 03 DEC 2020 to 31 DEC 2020