

LOC/DME I-EKI <b>110.3</b> Chan <b>40</b>	APP CRS <b>312°</b>	Rwy Idg <b>7510</b> TDZE <b>43</b> Apt Elev <b>46</b>
---	------------------------	---

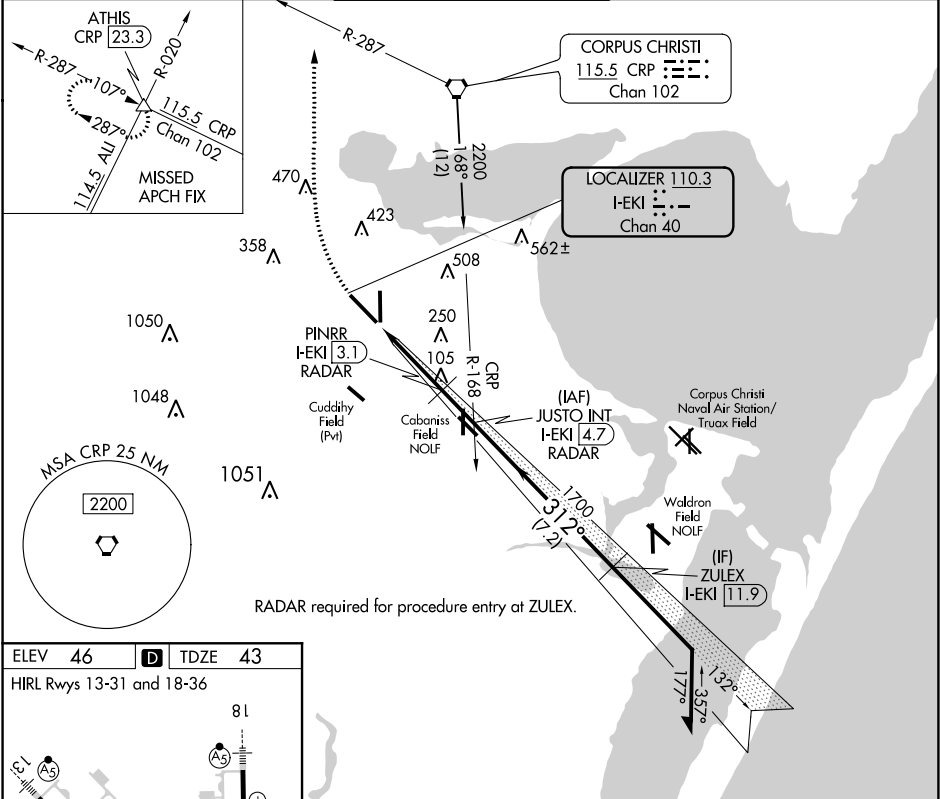
LOC RWY 31  
CORPUS CHRISTI INTL (CRP)

**⚠** DME or RADAR required. For inop MALSR, increase S-LOC 31 Cats C/D/E visibility to 1 mile.

**MALSR**

**MISSED APPROACH:** Climb to 700 then climbing right turn to 2000 on heading 335° and CRP VORTAC R-287 to ATHIS INT/CRP VORTAC 23.3 DME and hold.

ATIS <b>126.8</b>	CORPUS APP CON <b>120.9 348.725</b>	CORPUS TOWER <b>119.4 257.8</b>	GND CON <b>121.9 269.15</b>	CLNC DEL <b>118.55</b>
----------------------	--	------------------------------------	--------------------------------	---------------------------



ELEV **46** **D** TDZE **43**  
HIRL Rwy 13-31 and 18-36

Knots	60	90	120	150	180
Min:Sec	5:06	3:24	2:33	2:02	1:42

700 2000 ATHIS  
hdg 335° CRP R-287

JUSTO INT I-EKI 4.7 RADAR

Remain within 15 NM

2200 132° 2000

312° 1700

VGSI and descent angles not coincident (VGSI Angle 3.00° TCH 50).

1300

1 2.5 NM 1.6 NM

CATEGORY	A	B	C	D	E
S-LOC 31	400-1/2 357 (400-1/2)		400-5/8 357 (400-5/8)		
CIRCLING	500-1 454 (500-1)	580-1 534 (600-1)	820-2 774 (800-2 1/4)	820-2 774 (800-2 1/2)	820-2 774 (800-2 3/4)

SC-3, 03 DEC 2020 to 31 DEC 2020

SC-3, 03 DEC 2020 to 31 DEC 2020