

LOC/DME I-CRP	APP CRS	Rwy Idg	7510
110.3	132°	TDZE	46
Chan 40		Apt Elev	46

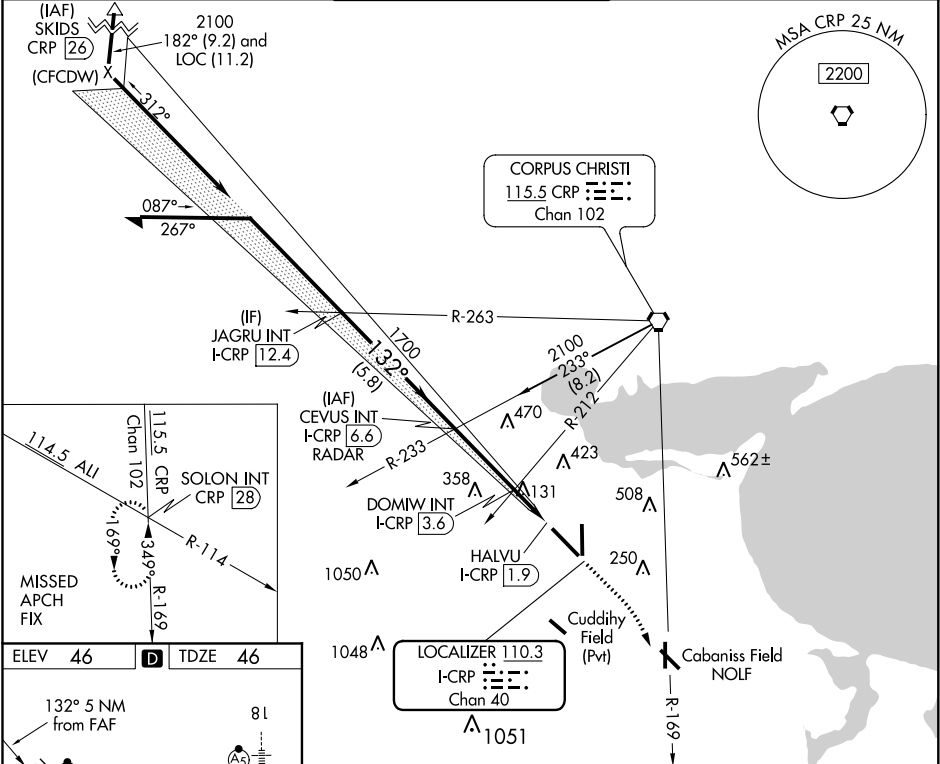
ILS or LOC RWY 13
CORPUS CHRISTI INTL (CRP)

⚠ For inop MALS, increase S-ILS 13 Cat E visibility to RVR 4000 and S-LOC 13 Cats C/D/E visibility to RVR 5500.
#RVR 1800 authorized with use of FD or AP or HUD to DA.

MALS

MISSED APPROACH: Climb to 500 then climbing right turn to 2000 on heading 132° and CRP VORTAC R-169 to SOLON INT/CRP VORTAC 28 DME and hold.

ATIS 126.8	CORPUS APP CON 120.9 348.725	CORPUS TOWER 119.4 257.8	GND CON 121.9 269.15	CLNC DEL 118.55
----------------------	--	------------------------------------	--------------------------------	---------------------------



ELEV 46 **D** TDZE 46

132° 5 NM from FAF

HIRL Rwy 13-31 and 18-36

FAF to MAP 4.7 NM

Knots	60	90	120	150	180
Min:Sec	4:42	3:08	2:21	1:53	1:34

Remain within 15 NM		CEVUS INT I-CRP 6.6 RADAR	500	2000	SOLON
2100		1700	500	2000	SOLON
GS 3.00° TCH 50		1700	500	2000	SOLON
Use I-CRP DME when on the localizer course.		1700	500	2000	SOLON
3 NM		1.1	0.6	0.3	
CATEGORY	A	B	C	D	E
S-ILS 13#	246/24 200 (200-½)				
S-LOC 13	400/24	354 (400-½)	400/30	354 (400-¾)	
C CIRCLING	500-1	580-1	820-2¼	820-2½	820-2¾
	454 (500-1)	534 (600-1)	774 (800-2¼)	774 (800-2½)	774 (800-2¾)