

WAAS CH 78400 W14A	APP CRS 137°	Rwy Idg 6983 TDZE 107 Apt Elev 107
--	------------------------	---


RNAV (GPS) RWY 14

MC ALLEN MILLER INTL (MF'E)

⚠

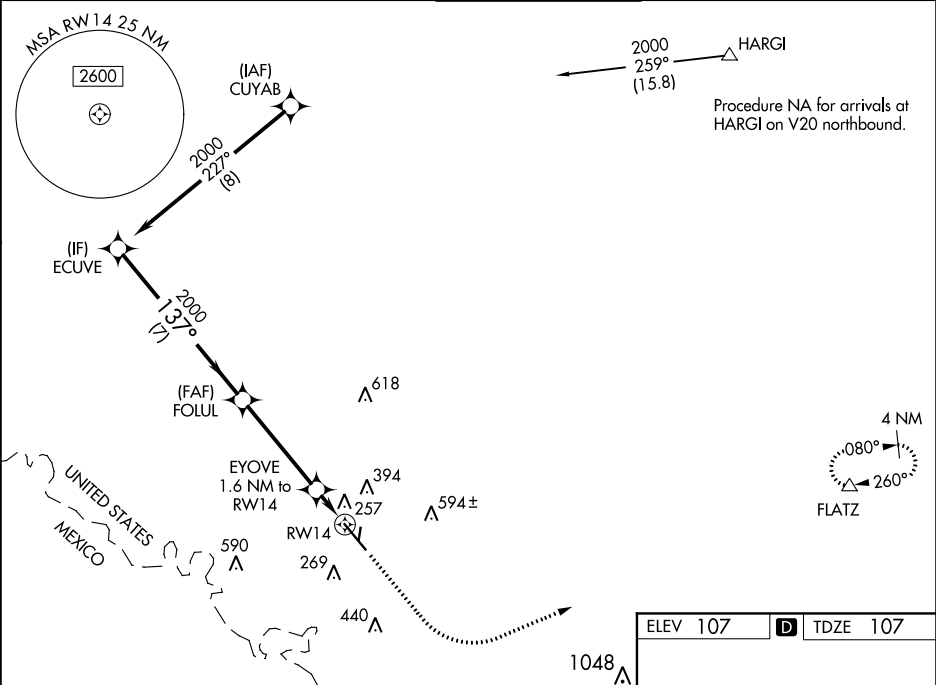
For uncompensated Baro-VNAV systems, LNAV/VNAV NA below 1°C (34°F) or above 54°C (130°F). Circling NA northeast of Rwy 14-32. DME/DME RNP-0.3 NA. When local altimeter setting not received, use Weslaco altimeter setting: increase all DA 39 feet and LNAV/VNAV all Cat visibility ½ mile; increase all MDA 40 feet and LNAV Cat C/D visibility ½ mile. Baro-VNAV and VDP NA when using Weslaco altimeter setting.

MALSRL



MISSED APPROACH:
Climb to 1500 then
climbing left turn to 3000
direct FLATZ and hold.

ATIS 128.5	VALLEY APP CON 121.0 377.2	MC ALLEN TOWER ★ 118.5 (CTAF) 256.9	GND CON 121.8	UNICOM 122.95
----------------------	--------------------------------------	---	-------------------------	-------------------------



ECUVE

FOLUL

2000

2000

2000

137°

GP 3.00°

TCH 60

7 NM

4.2 NM

0.5 NM

1.1

1500

3000

FLATZ

△

EYOVE

1.6 NM to RW14

*1.1 NM to RW14

RW14

*LNAV only

*660

137° to RW14

7120 X 130

2639 X 80

2033 X 36

81

TWR

36

30

REIL Rwy 32

HIRL Rwy 14-32

MIRL Rwy 18-36

CATEGORY	A	B	C	D
LPV DA	307-½		200 (200-½)	
LNAV/ VNAV DA	418-½		311 (400-½)	
LNAV MDA	520-½	413 (500-½)	520-¾	413 (500-¾)
CIRCLING	580-1	473 (500-1)	580-1½ 473 (500-1½)	800-2¼ 693 (700-2¼)