

APP CRS
172°

Rwy Idg
TDZE
Apt Elev

5004
1751
1751

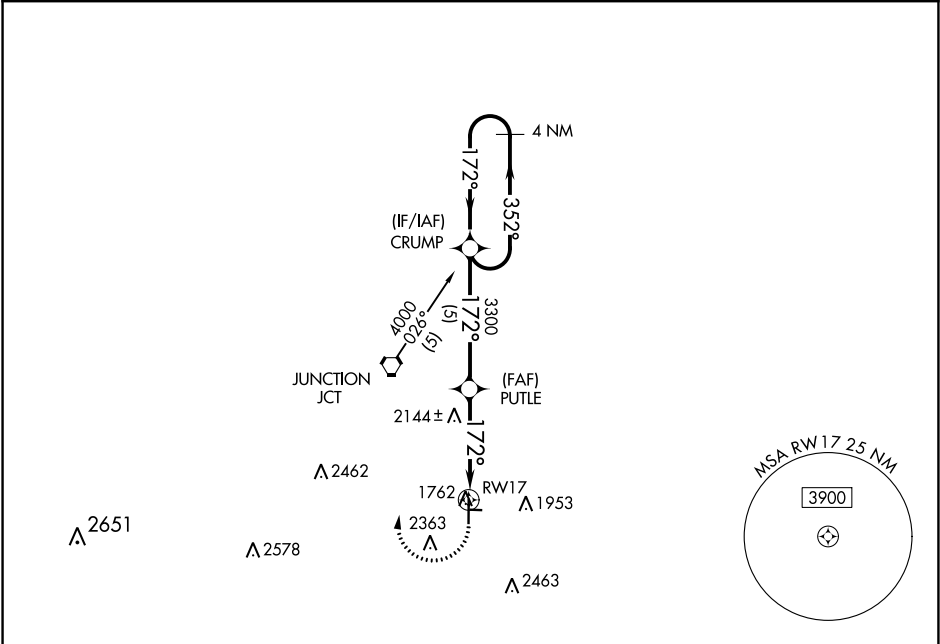
RNAV (GPS) RWY 17
KIMBLE COUNTY (JCT)

NA

Circling NA to Rwy 8-26. GPS or RNP-0.3 REQUIRED. DME/DME RNP-0.3 NA.

MISSED APPROACH: Climbing right turn to 4000 direct CRUMP WP and hold.

ASOS 119.275	HOUSTON CENTER 125.75 346.4	UNICOM 122.8 (CTAF) 1
-----------------	--------------------------------	--------------------------



ELEV 1751

TDZE 1751

4000

CRUMP

4 NM Holding Pattern

CRUMP

PUTLE

1.7 NM to RWY 17

RWY 17

4000

352°

172°

172°

3300

3.53° TCH 50

5 NM

2.3 NM

1.7 NM

CATEGORY	A	B	C	D
LNAV MDA	2420-1	669 (700-1)	2420-1¾ 669 (700-1¾)	NA
CIRCLING	2420-1	669 (700-1)	2740-3 989 (1000-3)	NA

5004 X 75

8

1.0% UP

35

2255 X 130

26

1.0% UP

MIRL Rwy 17-35 1