

TACAN Y RWY 17R

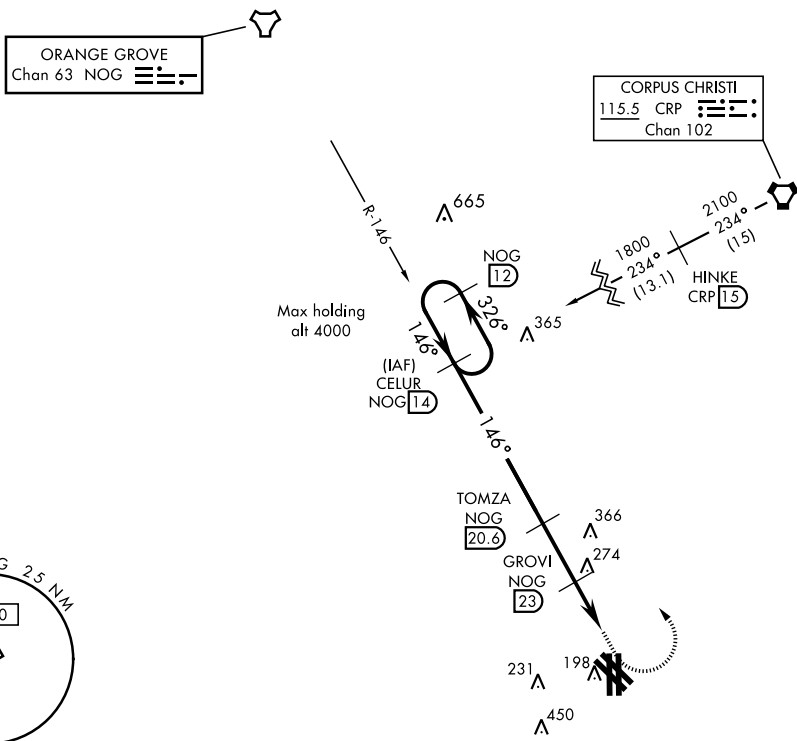
TACAN	NOG	APCH CRS	Rwy Idg	8000
Chan	63	146°	TDZE	50
			Arpt Elev	50

AL-918 [USN]

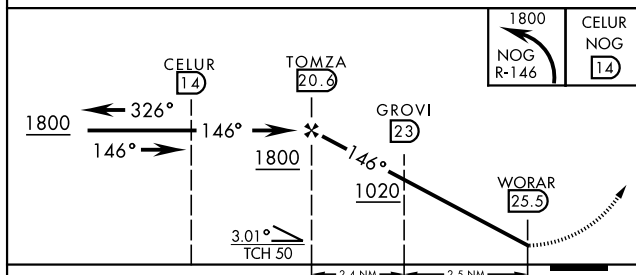
KINGSVILLE NAS (KNQI)

MISSED APPROACH: Climbing left turn to 1800, intercept NOG TACAN R-146 to CELUR and hold.

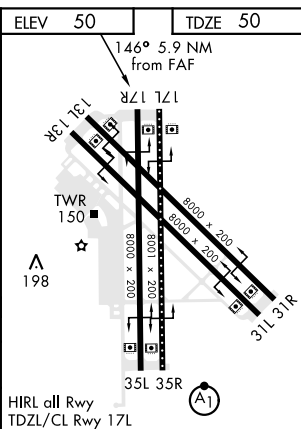
ATIS ★ 276.2	KINGSVILLE APP CON 119.9 290.45	KINGSVILLE TOWER ★ 124.1 377.05	GND CON 239.05	CLNC DEL 328.4	ASR/PAR
-----------------	------------------------------------	------------------------------------	-------------------	-------------------	---------



EMERG SAFE ALT 100 NM 16.200



CATEGORY	A	B	C	D
S-17R	560-1	511 (600-1)	560-1 $\frac{3}{8}$	511 (600-1 $\frac{3}{8}$)
C CIRCLING	560-1	510 (600-1)	760-2 710 (800-2)	760-2 $\frac{1}{4}$ 710 (800-2 $\frac{1}{4}$)



KINGSVILLE, TEXAS

27°30'N-97°49'W

KINGSVILLE NAS (KNQI)

Amdt 1 05NOV20

TACAN Y RWY 17R

SC-3, 03 DEC 2020 to 31 DEC 2020

SC-3, 03 DEC 2020 to 31 DEC 2020