

HI-TACAN RWY 35R

TACAN NQI Chan 125	APCH CRS 004°	Rwy Idg 8001 TDZE 49 Arpt Elev 50
------------------------------	-------------------------	--

JAL-918 [USN]

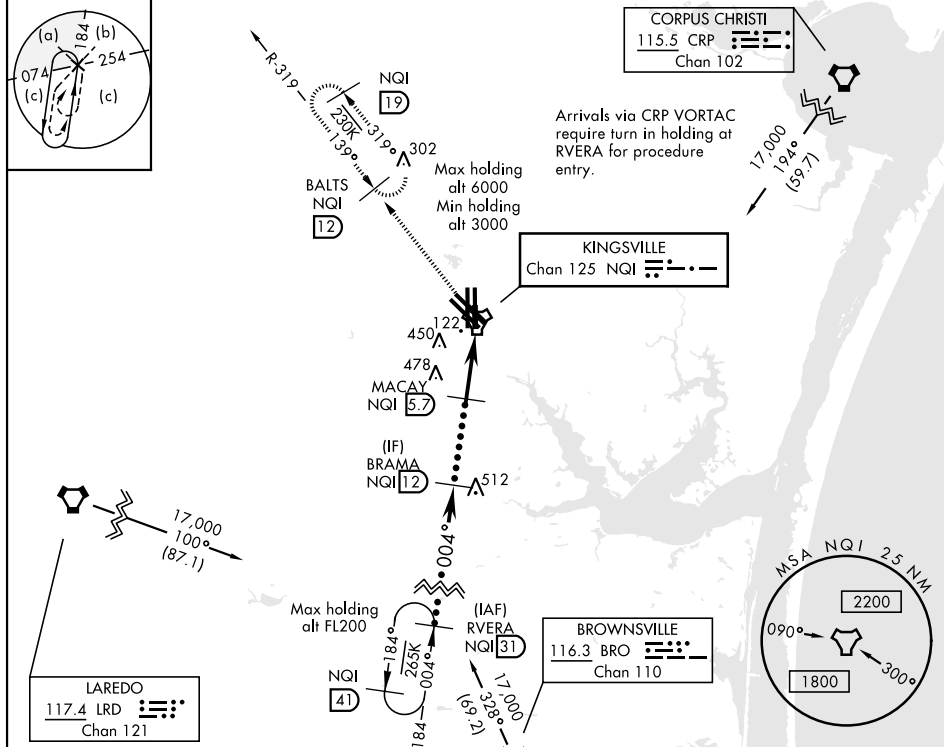
KINGSVILLE NAS (KNQI)

* When ALS inop, increase CAT CDE vis to 1 mile.

ALSF-1

MISSED APPROACH: Climb to 3000 direct NQI TACAN and climbing left turn to intercept NQI R-319 to BALTS and hold. Continue climb-in-hold to 3000.

ATIS ★ 276.2	KINGSVILLE APP CON 119.9 290.45	KINGSVILLE TOWER ★ 124.1 377.05	GND CON 239.05	CLNC DEL 328.4	ASR/ PAR
-----------------	------------------------------------	------------------------------------	-------------------	-------------------	-------------



EMERG SAFE ALT 100 NM 16,200

