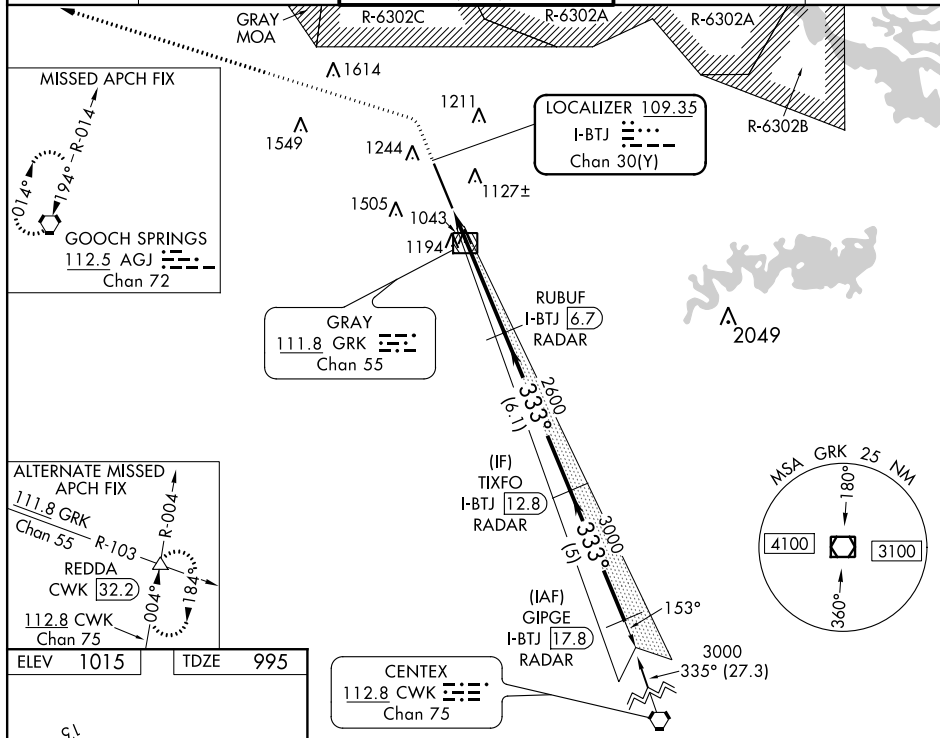


ILS or LOC RWY 33

MISSED APPROACH: Climb to 2000 then climbing left turn to 3000 direct AGJ VORTAC and hold.



<div style="display: flex; justify-content: space-around;"> <div style="text-align: center;"> 2000 </div> <div style="text-align: center;"> 3000 </div> <div style="text-align: center;"> AGJ </div> </div> <p>*LOC only.</p>					
CATEGORY	A	B	C	D	E
S-ILS 33	1195-1/2 200 (200-1/2)				
S-LOC 33	1360-1/2 365 (400-1/2)		1360-3/4 365 (400-3/4)		
CIRCLING	1540-1 525 (600-1)		1560-1 1/2 545 (600-1 1/2)	1620-2 605 (700-2)	1740-2 1/2 725 (800-2 1/2)