

COLEMAN, TEXAS

AL-881 (FAA)

19283

WAAS CH 82034 W33A	APP CRS 328°	Rwy Idg 4506 TDZE 1689 Apt Elev 1697
--	------------------------	---

APP CRS
328°

Rwy Idg	4506
TDZE	1689
Apt Elev	1697

RNAV (GPS) RWY 33
COLEMAN MUNI (COM)

RNP APCH.

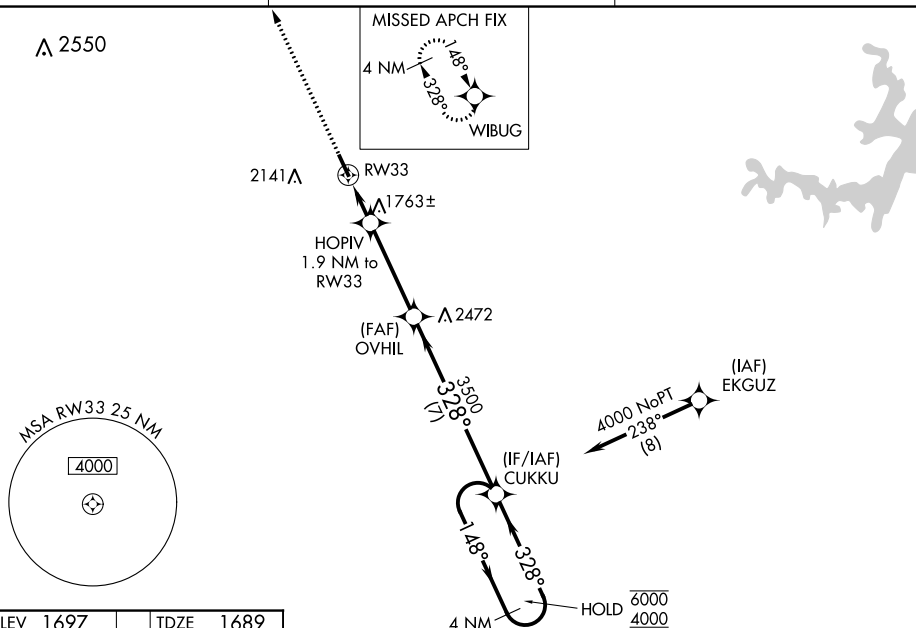
T Rwy 33 helicopter visibility reduction below $\frac{3}{4}$ SM NA.
A For uncompensated Baro-VNAV systems, LNAV/VNAV NA below -18°C or above 54°C.

MISSED APPROACH: Climb to 4000 direct WIBUG and hold.

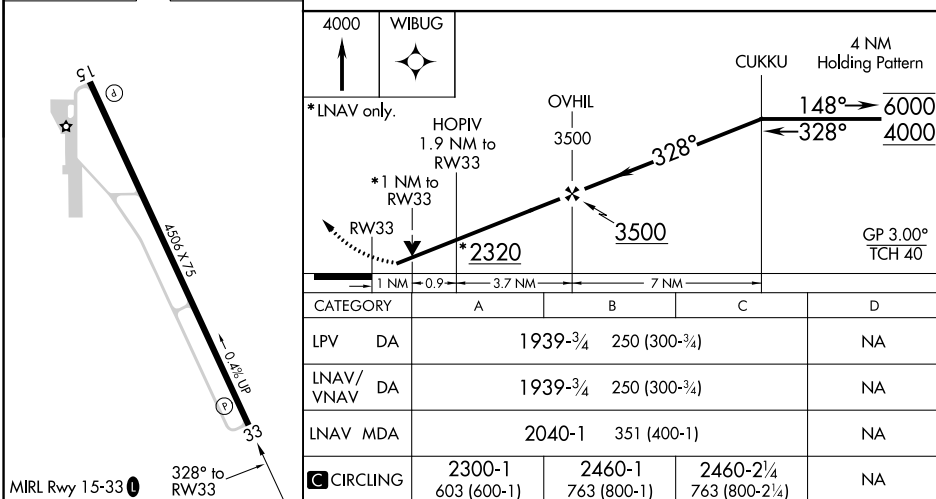
AWOS-3PT
119.1

FORT WORTH CENTER
127.45 290.3

UNICOM
122.8 (CTAF) **L**



ELEV 1697		TDZE 1689
-----------	--	-----------



COLEMAN, TEXAS

Amdt 1 10OCT19

COLEMAN MUNI (COM)

31°50'N-99°24'W

RNAV (GPS) RWY 33

SC-3, 03 DEC 2020 to 31 DEC 2020