

APP CRS  
**311°**

Rwy Idg  
TDZE  
Apt Elev

**7257**  
**36**  
**36**

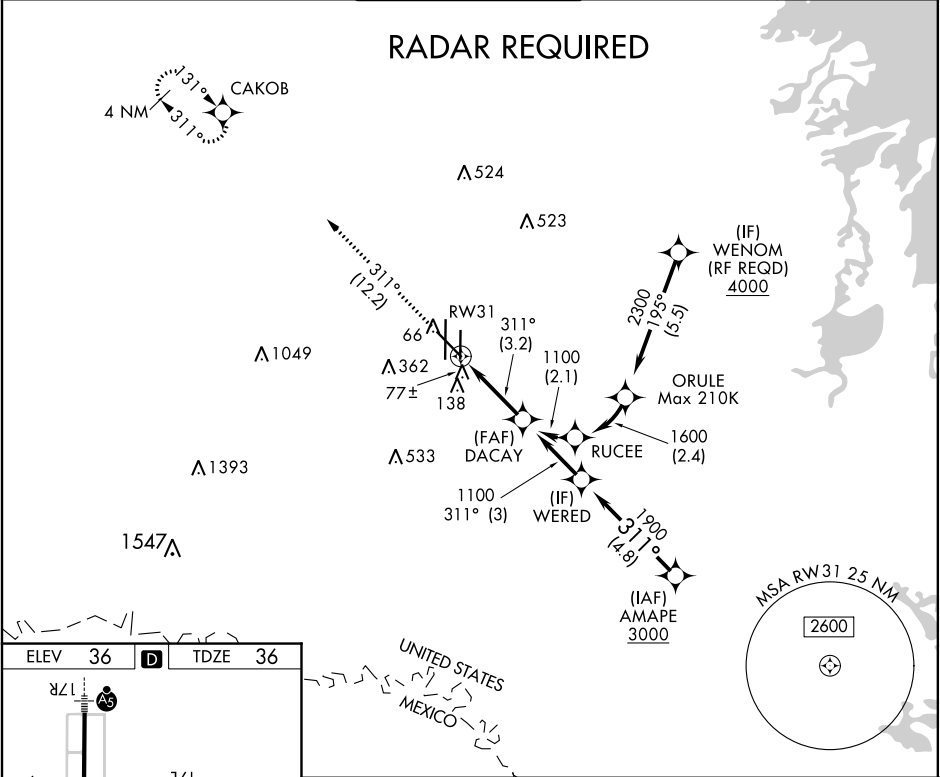
**RNAV (RNP) Z RWY 31**  
VALLEY INTL (HRL)

▼ For uncompensated Baro-VNAV systems, procedure NA below 2°C (36°F) or above 54°C (130°F). GPS Required. For inop ALS, increase RNP 0.17 all Cats visibility to ½ SM, and RNP 0.30 all Cats visibility 1 SM.

MALSR

MISSED APPROACH: Climb to 2000 on track 311° to CAKOB and hold.

ATIS <b>124.85</b>	VALLEY APP CON <b>120.7 279.5</b>	HARLINGEN TOWER ★ <b>119.3 (CTAF) 317.6</b>	GND CON <b>121.7</b>	UNICOM <b>122.95</b>
-----------------------	--------------------------------------	--	-------------------------	-------------------------



ELEV 36 D TDZE 36

MIRL Rwy 17L-35R  
REIL Rwys 13 and 17L  
HIRL Rwys 13-31 and 17R-35L

2000 tr 311° CAKOB

See Planview for multiple IF locations.

CATEGORY	A	B	C	D
RNP 0.17 DA		310-½	274 (300-½)	
RNP 0.30 DA		360-⅝	324 (400-⅝)	

**AUTHORIZATION REQUIRED**