

WAAS CH <b>90430</b> <b>W17B</b>	APP CRS <b>176°</b>	Rwy Idg <b>5949</b> TDZE <b>34</b> Apt Elev <b>36</b>
--	------------------------	---

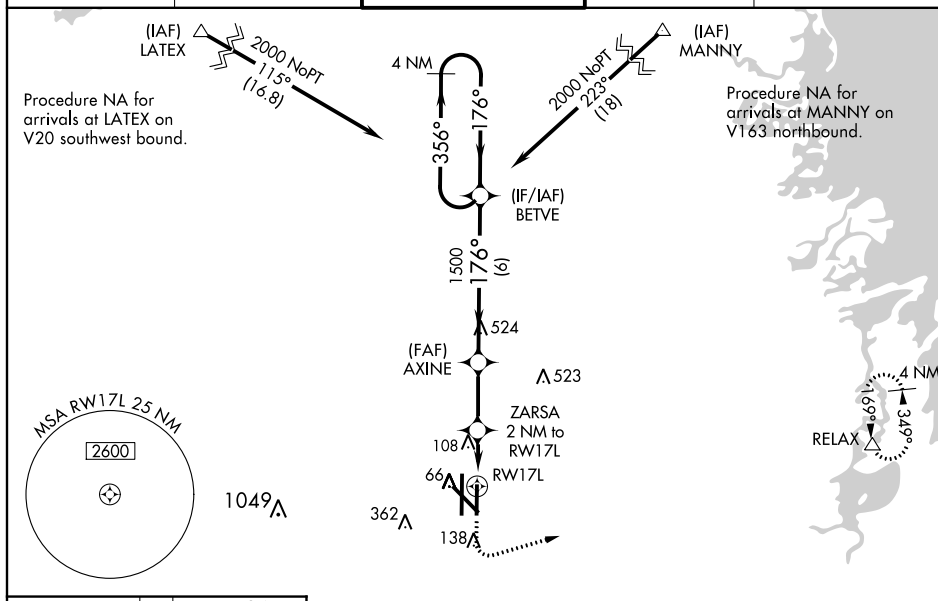
RNAV (GPS) RWY 17L  
VALLEY INTL (HRL)

VALLEY INTL (HRL)

**⚠** For uncompensated Baro-VNAV systems, LNAV/VNAV NA below -15°C (5°F) or above 54°C (130°F). DME/DME RNP-0.3 NA. When local altimeter setting not received, use Port Isabel altimeter setting: increase LPV DA to 326 feet and all visibilities  $\frac{1}{8}$  SM; increase LNAV/VNAV DA to 392 feet and all visibilities  $\frac{1}{8}$  SM; increase all MDAs 60 feet and visibility Cats C and D  $\frac{1}{4}$  SM. Baro-VNAV and VDP NA with Port Isabel altimeter setting.

**MISSED APPROACH:**  
Climb to 500 then  
climbing left turn to  
2000 direct RELAX  
and hold.

ATIS <b>124.85</b>	VALLEY APP CON <b>120.7 279.5</b>	HARLINGEN TOWER ★ <b>119.3 (CTAF) 0 317.6</b>	GND CON <b>121.7</b>	UNICOM <b>122.95</b>
-----------------------	--------------------------------------	--	-------------------------	-------------------------

[illegible]