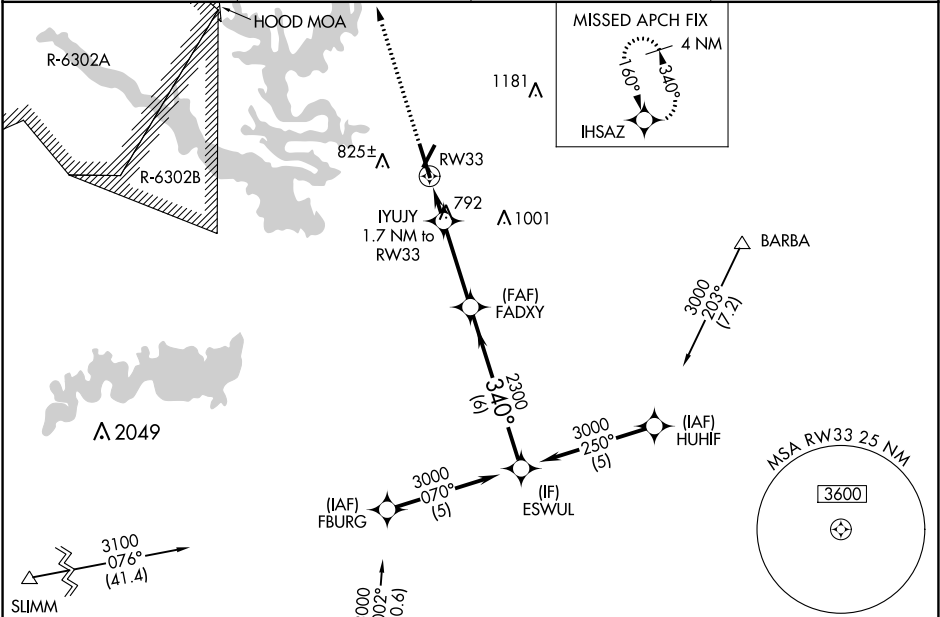


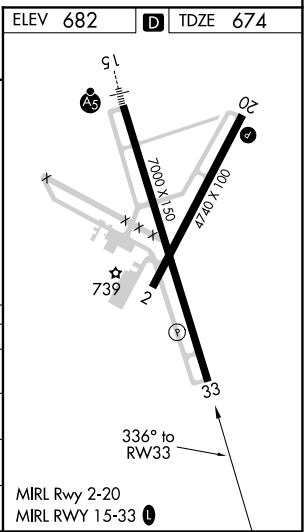
WAAS Ch 82401 W33A	APP CRS 340°	Rwy Idg TDZE Apt Elev	6301 674 682
--	------------------------	-----------------------------	---

RNAV (GPS) RWY 33
DRAUGHON-MILLER CENTRAL TEXAS RGNL (TPL)

RNP APCH.		MISSED APPROACH: Climb to 3000 direct ILSAZ and hold.	
For uncompensated Baro-VNAV systems, LNAV/VNAV NA below -16°C or above 54°C .			
AWOS-3PT 134.975	GRAY APP CON 120.075 370.0	CNLC DEL 125.9	UNICOM 123.0 (CTAF) 1



3000 ILSAZ		VGSI and RNAV glidepath not coincident (VGSI Angle 3.00/TCH 34).	
*LNAV only.	IYUJY 1.7 NM to RW33	FADXY 2300	ESWUL 3000
	*1.2 NM to RW33		
			GP 3.00° TCH 50
	1.2 NM	0.5	3.2 NM
			6 NM
CATEGORY	A	B	C
LPV DA	874-3/4	200 (200-3/4)	
LNAV/VNAV DA	951-1	277 (300-1)	
LNAV MDA	1060-1	386 (400-1)	1060-1 1/8 386 (400-1 1/8)
CIRCLING	1120-1 438 (500-1)	1180-1 498 (500-1)	1280-1 598 (600-1 1/2)



SC-3, 03 DEC 2020 to 31 DEC 2020

SC-3, 03 DEC 2020 to 31 DEC 2020