
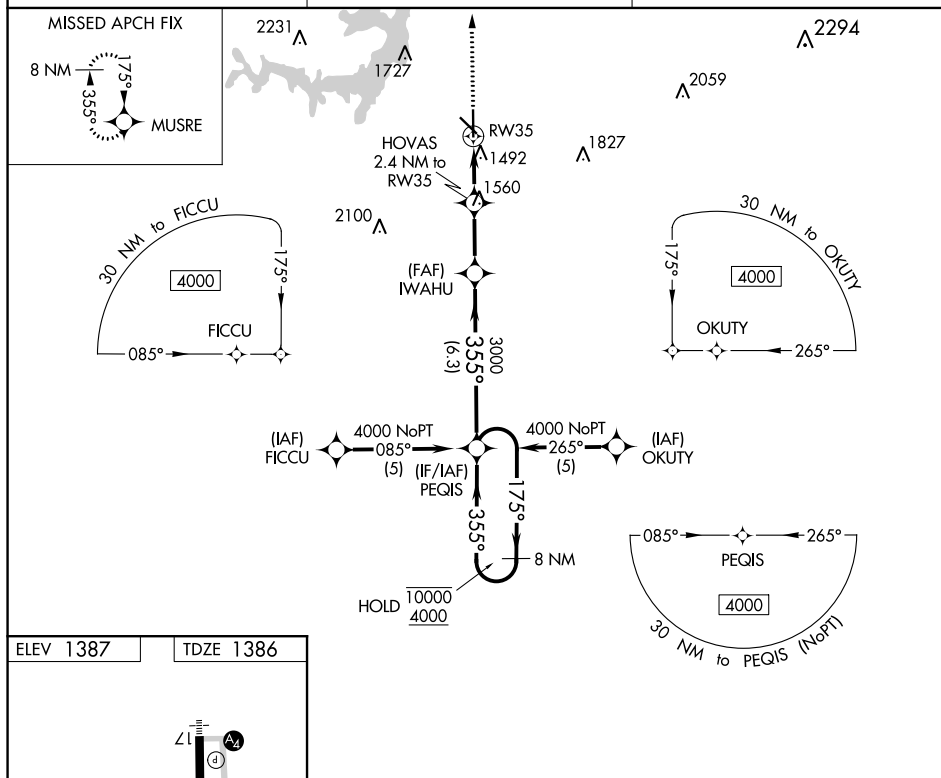


WAAS CH 77525 W35A	APP CRS 355°	Rwy Idg 5599 TDZE 1386 Apt Elev 1387
--	------------------------	---

RNAV (GPS) RWY 35

BROWNWOOD RGNL (BWD)

RNP APCH.		MISSED APPROACH: Climb to 4000 direct MUSRE and hold.
 Rwy 35 helicopter visibility reduction below 3/4 SM NA.		
AWOS-3 118.325	FORT WORTH CENTER 127.45 290.3	UNICOM 122.8 (CTAF) 0



The image consists of two parts: a map of the Hawaiian Islands and a detailed flight profile for a flight from Hawaii to Maui.

Map of the Hawaiian Islands: The map shows the Hawaiian Islands with a flight path from Hawaii to Maui. The flight path starts at Hawaii, passes near the 13-31 and 17-35 runways, and ends at Maui. The map includes labels for the 13-31 and 17-35 runways, the 3500 feet altitude, and the 10000 feet altitude.

Flight Profile: The flight profile shows a climb from 3500 feet to 10000 feet, with a holding pattern at 10000 feet. The profile includes a table with columns for CATEGORY, LPV, DA, LNAV, MDA, and various altitudes and distances.

CATEGORY	LPV	DA	LNAV	MDA	Altitude	Distance
					1636-1	250 (300-1)
					1780-1	394 (400-1)
					1780-1 1/8	394 (400-1 1/8)
					1780-1 1/4	394 (400-1 1/4)