

WAAS CH 77530 W17B	APP CRS 175°	Rwy Idg 12250 TDZE 542 Apt Elev 542
----------------------------------------	------------------------	----------------------------------------------------------------

RNAV (GPS) Y RWY 17R
AUSTIN-BERGSTROM INTL (AUS)

T For uncompensated Baro-VNAV systems, LNAV/VNAV NA below -6°C (22°F) or above 54°C (130°F). Simultaneous approach authorized. LNAV procedure NA during simultaneous operations. Use of FD or AP providing RNP track guidance required during simultaneous operations. DME/DME RNP-0.3 NA. For inop ALS increase LNAV/VNAV all Cats visibility to RVR 4500. Increase LNAV visibility all Cats to RVR 5500.

MALS

MISSED APPROACH: Climb to 1000 then climbing right turn to 3500 direct GARDS and hold.

D-ATIS	AUSTIN APP CON		AUSTIN TOWER		GND CON		CLNC DEL		CPDLC
	127.225	317.65 (EAST)							
124.4	120.875	270.25 (SOUTH)	121.0	281.5	121.9	348.6	125.5	263.0	
	119.0	370.85 (WEST)							

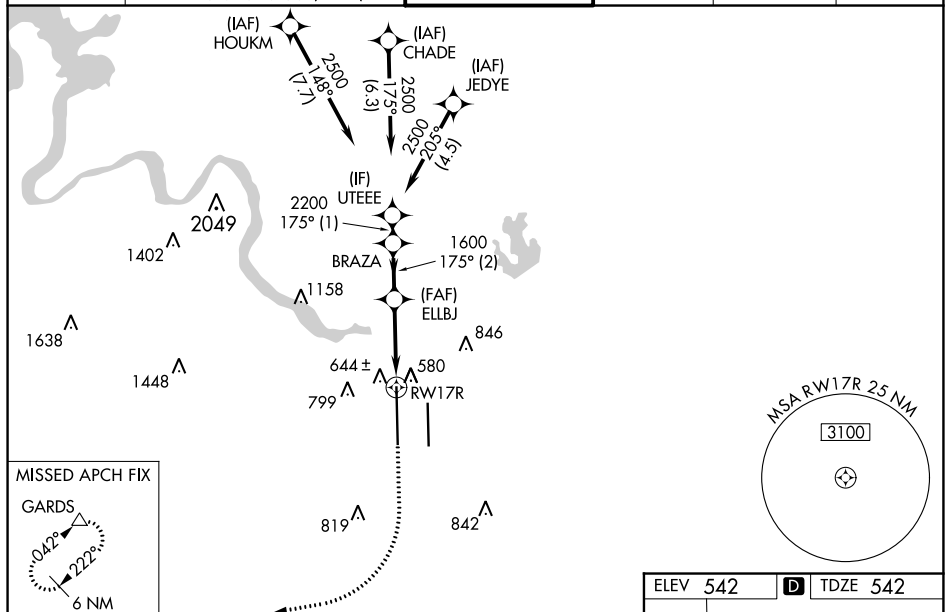


Figure 1: Example of a 5-segment RNAV approach chart. The chart shows a 5-segment RNAV approach for RW17R. The segments are labeled A, B, C, D, and E. Segment A is a 1 NM segment from the start of the approach to the beginning of segment B. Segment B is a 2 NM segment. Segment C is a 2.2 NM segment. Segment D is a 0.9 NM segment ending at the runway threshold. Segment E is the final segment. The chart includes various data points: UTEEE, BRAZA, ELBJ, and RW17R. The chart also shows the minimum descent altitude (MDA) of 900/40 and the minimum descent altitude (MDA) of 358 (400-3/4). The chart includes a table with the following data: CATEGORY, LPV, LNAV/VNAV, LNAV MDA, and CIRCLING. The table also includes the following data: 1040-1, 1100-1, 1200-1 3/4, 1200-2, 1520-3, 498 (500-1), 558 (600-1), 658 (700-1 3/4), 658 (700-2), 978 (1000-3). The chart also includes a diagram of the runway layout showing the runway width of 1250 x 150 and the runway length of 3000 x 150. The chart also includes a diagram of the runway layout showing the runway width of 1250 x 150 and the runway length of 3000 x 150.

CATEGORY	A	B	C	D	E
LPV DA		742/40	200 (200-3/4)		
LNAV/VNAV DA		834/40	292 (300-3/4)		
LNAV MDA		900/40	358 (400-3/4)		
CIRCLING	1040-1 498 (500-1)	1100-1 558 (600-1)	1200-1 3/4 658 (700-1 3/4)	1200-2 658 (700-2)	1520-3 978 (1000-3)

TDZ/CL Rwy 17L and 35R
HRL Rwy 17L-35R and 17R-35L