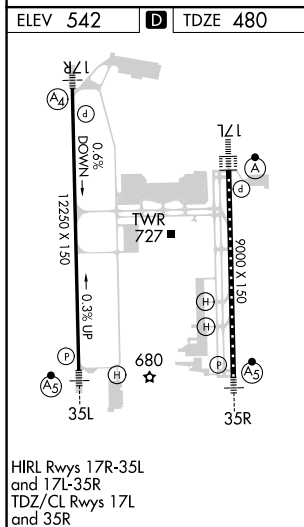
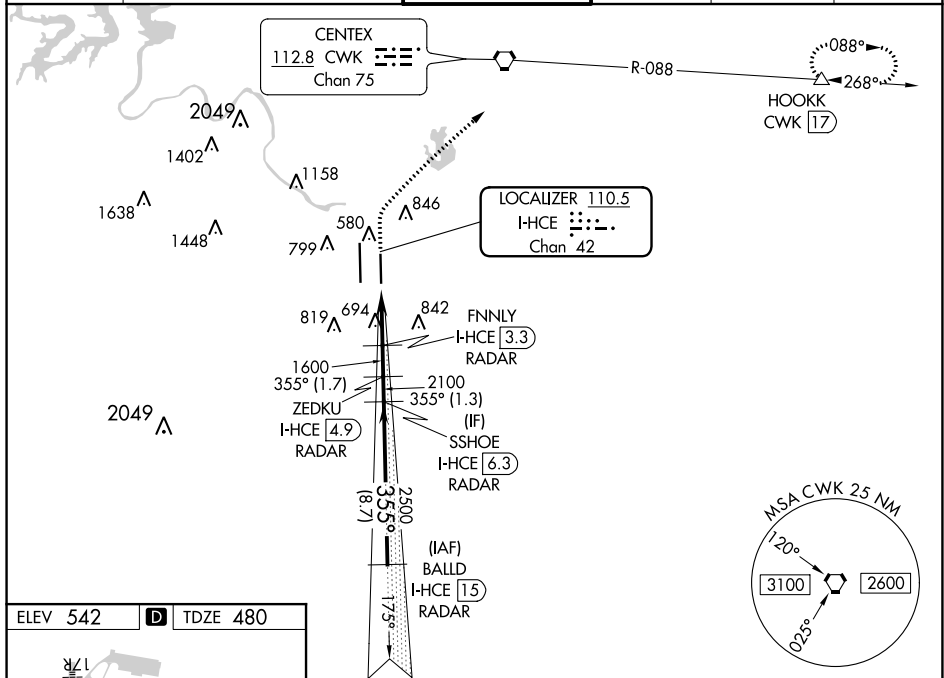


ILS RWY 35R (SA CAT I & II)
AUSTIN-BERGSTROM INTL (AUS)

MALSR
A5

MISSED APPROACH: Climb to 1000 then climbing right turn to 3000 on heading 030° and CWK VORTAC R-088 to HOOKK/CWK 17 DME and hold.

D-ATIS	AUSTIN APP CON		AUSTIN TOWER	GND CON	CLNC DEL	CPDLC
124.4	127.225 317.65 (EAST)	120.875 270.25 (SOUTH)	121.0 281.5	121.9 348.6	125.5 263.0	
	119.0 370.85 (WEST)					



1000 ↑	3000 hdg 030°	CWK R-088	HOOKK △	VGSI and ILS glidepath not coincident (VGSI Angle 3.00/TCH 59).				SSHOE I-HCE 6.3	BALLD I-HCE 15 RADAR
<p>I-HCE DME ANTENNA</p> <p>FNNLY I-HCE 3.3 RADAR</p> <p>ZEDKU I-HCE 4.9 RADAR</p> <p>1600</p> <p>2100</p> <p>2500</p> <p>355°</p> <p>4000</p> <p>GS 3.00° TCH 52</p> <p>961</p> <p>3.4 NM</p> <p>1.7 NM</p> <p>1.3 NM</p> <p>8.7 NM</p>									
CATEGORY	A			B		C		D	
S-ILS 35R	SA CAT I			RA 235/14		150 DA 630			
S-ILS 35R	SA CAT II			RA 110/12		100 DA 580			

SA CATEGORY I & II ILS - SPECIAL AIRCREW
& AIRCRAFT CERTIFICATION REQUIRED