

LOC/DME I-VNKG <b>110.5</b> Chan <b>42</b>	APP CRS <b>175°</b>	Rwy Idg <b>9000</b> TDZE <b>492</b> Apt Elev <b>542</b>	ILS RWY 17L (CAT II & III) AUSTIN-BERGSTROM INTL (AUS)	
--------------------------------------------------	------------------------	---------------------------------------------------------------	-----------------------------------------------------------	--

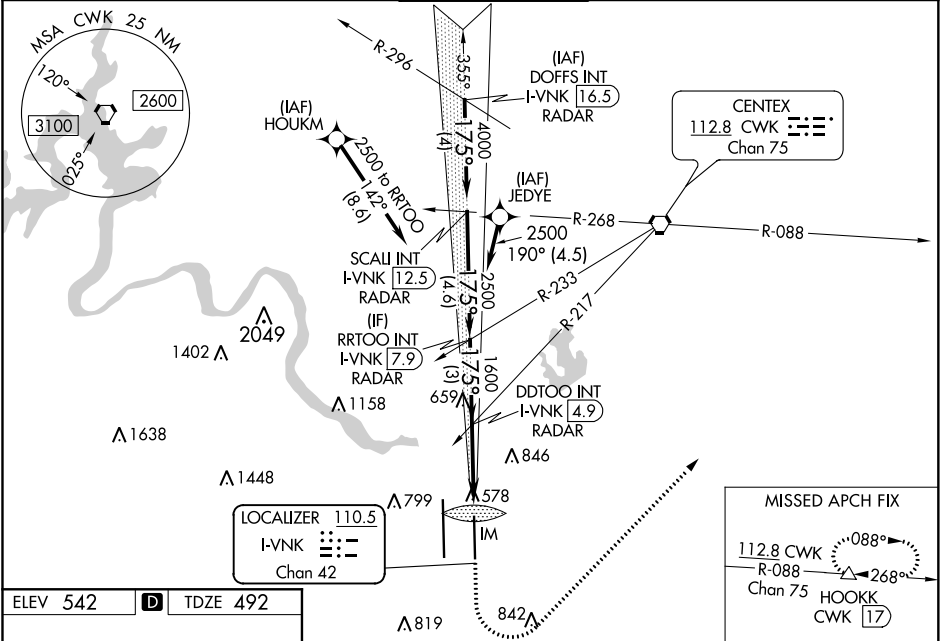
RNAV 1- GPS or RADAR required for procedure entry.  
DME required.  
From HOUKM, JEDYE: RNAV 1- GPS required.

Simultaneous approach authorized.

ALSIF-2

MISSED APPROACH: Climb to 1000, then climbing left turn to 3000 heading 040° and CWK VORTAC R-088 to HOOKK/CWK 17 DME and hold.

D-ATIS <b>124.4</b>	AUSTIN APP CON <b>127.225 317.65</b> (EAST) <b>120.875 270.25</b> (SOUTH) <b>119.0 370.85</b> (WEST)	AUSTIN TOWER <b>121.0 281.5</b>	GND CON <b>121.9 348.6</b>	CLNC DEL <b>125.5 263.0</b>	CPDLC
------------------------	---------------------------------------------------------------------------------------------------------------	------------------------------------	-------------------------------	--------------------------------	-------



ELEV 542    **D**    TDZE 492

VGSI and ILS glidepath not coincident (VGSI Angle 3.00/TCH 74).

1000	3000	CWK R-088	HOOKK
↑	hdg 040°	△	△

DOFFS INT I-VNKG 16.5 RADAR	SCALI INT I-VNKG 12.5 RADAR	RRTOO I-VNKG 7.9 RADAR	DDTOO I-VNKG 4.9 RADAR	IM
5000	4000	2500	1600	592
GS 3.00° TCH 61				
4 NM    4.6 NM    3 NM    3.3 NM    1.201 NM				
CATEGORY	A	B	C	D
S-ILS 17L	CAT II RA 105/12 100 DA 592			
S-ILS 17L	CAT III RVR 06			

CATEGORY II & III ILS - SPECIAL AIRCREW & AIRCRAFT CERTIFICATION REQUIRED

AUSTIN, TEXAS

Amdt 3A 19JUL18

30°12'N-97°40'W

AUSTIN-BERGSTROM INTL (AUS)

ILS RWY 17L (CAT II & III)

SC-3, 03 DEC 2020 to 31 DEC 2020

SC-3, 03 DEC 2020 to 31 DEC 2020