

WAAS CH 90432 W31A	APP CRS 306°	Rwy Idg TDZE 583 Apt Elev 595
----------------------------------------	------------------------	---------------------------------------------------------

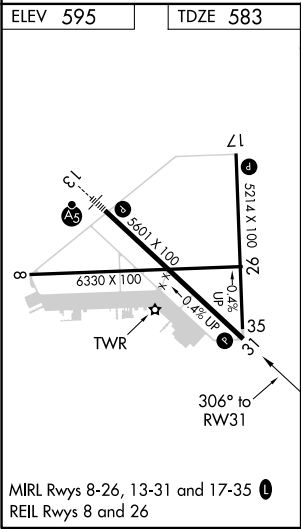
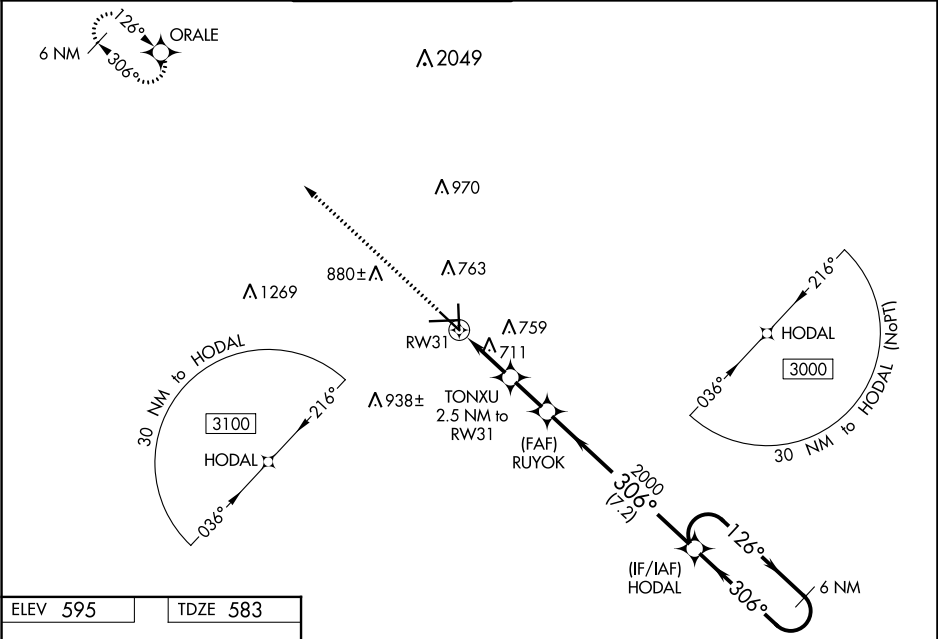
RNAV (GPS) RWY 31

SAN MARCOS RGNL (HYI)

⚠ Baro-VNAV NA when using New Braunfels altimeter setting. For uncompensated Baro-VNAV systems, LNAV/VNAV NA below -16°C (3°F) or above 54°C (130°F). When local altimeter setting not received, use New Braunfels altimeter setting and increase all DA 43 feet and all MDA 60 feet; increase LPV all Cats and LNAV/VNAV all Cats visibility ½ mile and LNAV Cat C/D/E and Circling Cat C/D visibility ¼. Circling NA for Cat E SW of Rwy 13-31. DME/DME RNP-0.3 NA. VDP NA with New Braunfels altimeter setting. Helicopter visibility reduction below ¾ SM NA.

MISSED APPROACH:
Climb to 3500 direct
ORALE and hold.

ATIS ★ 120.825	AUSTIN APP CON 119.0 370.85	SAN MARCOS TOWER ★ 126.825 (CTAF) L	GND CON 120.125	CLNC DEL 120.125	CLNC DEL 121.35 (when twr closed)
--------------------------	---------------------------------------	------------------------------------------------------	---------------------------	----------------------------	------------------------------------------------



3500

ORALE

↑

✦

*LNAV only.

TONXU

2.5 NM to RW31

RUYOK

2000

HODAL

6 NM Holding Pattern

126°

306°

3000

*1.1 NM to RW31

RW31

*1420

2000

GP 3.00° TCH 60

1.1 NM

1.4 NM

1.8 NM

7.2 NM

CATEGORY	A	B	C	D	E
LPV DA	860-7⁄8 277 (300-7⁄8)				
LNAV/VNAV DA	906-1 323 (400-1)				
LNAV MDA	980-1 397 (400-1)		980-1½ 397 (400-1½)		
CIRCLING	1080-1	1120-1	1240-1¾	1320-2¼	1340-2¾
	485 (500-1)	525 (600-1)	645 (700-1¼)	725 (800-2¼)	745 (800-2¾)